

G&C

Uniformes

HOTEL – GAMA ALTA

G&C Uniformes
c/ Buenos Aires, 26
13300 – Valdepeñas (Ciudad Real)
Telf. 926312654 – 639175945

1/2/3.

1. **NEW MEN'S MODERN FIT JACKET**
 Single-breasted, functional jetted pockets with flaps, internal breast pockets and mobile phone pocket, fully lined with textured spot inner, spot sleeve and striped piping.
 Length 74cm/29in.
 Sizes 34-52.
 Blue **MJ1110**

2. **NEW MEN'S WAISTCOAT**
 Functional jetted pockets, adjustable back, fully lined with textured spot inner.
 Length 59cm/23.2in.
 Sizes 34-52.
 Blue **MW0640**

3. **NEW MEN'S FLAT FRONT MODERN FIT TROUSER**
 Front zip fastening, side pockets, back pocket, half lined, belt loops, permanent trouser crease and Responsive Waistband.
 Sizes 28-50.
 Blue
 Regular: 78,5cm/31in **MT1360**
 Long: 83,5cm/33in **MT1370**

4. **NEW SLASH NECKLINE DRESS**
 Semi-filled, cuffed sleeve, slash neckline, centre back zip, decorative shaping seams around the front bust, back darts, fully lined.
 Length 100cm/39.4in.
 Sizes 6-26.
 Blue **FD2970**

5. **NEW LADIES NOTCH NECK JACKET**
 Functional jetted pockets, fully lined with textured spot inner, spot sleeve and striped piping.
 Length 62cm/24.4in.
 Sizes 6-26.
 Blue **FJ1630**

ALL IN OUR LATEST FABRIC
 66% Polyester, 33% Viscose,
 1% Lycra with stain resistant Teflon®.
 100% Polyester Lining.
 Machine washable at 40°.

Modern fabrics and finishes with style

1/2/3.

4.

G&C Uniformes

1/2.
For undersuit top see page 103.

1. NEW LADIES NOTCH NECK JACKET
Functional jetted pockets, fully lined with textured spot inner, spot sleeve and striped piping.
Length 62cm/24.4in.
Sizes 6-26.
Blue **FJ1630**

2. NEW LADIES SLIM LEG TROUSER
Drop waist styling, slim leg, front zip fastening, half lined, side pockets, belt loops, permanent trouser crease and Responsive Waistband.
Sizes 6-26.
Blue Length 73.5cm/29in. **FT3250**
Unhemmed inside leg 89cm/35in. **FT3260**

3. NEW LADIES WAISTCOAT
Functional jetted pockets, adjustable back, fully lined with textured spot inner.
Length 53.5cm/21in.
Sizes 6-26.
Blue **FW0620**

4. NEW SKIRT
Drop waist styling, centre front seam detail, centre back zip and pleat vent, fully lined.
Length 58.5cm/23in.
Sizes 6-26.
Blue **FS1280**

ALL IN OUR LATEST FABRIC
66% Polyester, 33% Viscose,
1% Lyora with stain resistant Teflon®.
100% Polyester Lining.
Machine washable at 40°.



3/4.

1/2.

Mix and match to find your silhouette








1. NEW LADIES NOTCH NECK JACKET

Functional jetted pockets, fully lined with textured spot inner, spot sleeve and striped piping.

Length 60cm/24.4in.
Sizes 6-26.

Grey FJ1640

ALL IN OUR LATEST FABRIC

66% Polyester, 33% Viscoso, 1% Lycra with stain resistant Teflon®. 100% Polyester Lining. Machine washable at 40°.

1.

For blouse see page 83.



2.



2/3.

2. NEW MEN'S MODERN FIT JACKET

Single-breasted, functional jetted pockets with flaps, internal breast pockets and mobile phone pocket, fully lined with textured spot inner, spot sleeve and striped piping.

Length 74cm/29in.
Sizes 34-32.

Grey MJ1120

3. NEW MEN'S FLAT FRONT MODERN FIT TROUSER

Front zip fastening, side pockets, back pocket, half lined, belt loops, permanent trouser crease and Responsive Waistband.

Grey
Regular: 78.5cm/31in MTT1380
Long: 83.5cm/33in MTT1390

4. NEW LADIES SLIM LEG TROUSER

Drop waist styling, slim leg, front zip fastening, half lined, side pockets, belt loops, permanent trouser crease and Responsive Waistband.

Grey
Length 73.5cm/29in FT3270
Unhemmed inside leg 89cm/35in FT3260



1/4.

“ Accessorise your suiting with flair, choosing brown leather belts and shoes for a contemporary touch or a deep patterned blue in the tie. ”



HELEN HARKER,
DESIGN MANAGER



For accessories see page 245.



1.

1. NEW SLASH NECKLINE DRESS
Semi-fitted, capped sleeve, slash neckline, centre back zip, decorative shabing seams around the front bust, back darts, fully lined.

Length 100cm/39.4in.
Sizes 6-26.

Grey **FD2980**

2. NEW MEN'S MODERN FIT JACKET

Single-breasted, functional jetted pockets with flaps, internal breast pockets and mobile phone pocket, fully lined with textured spot inner, spot sleeve and striped piping.

Length 74cm/29in.
Sizes 34-52.

Grey **MJ1120**

3. NEW MEN'S WAISTCOAT

Functional jetted pockets, adjustable back, fully lined with textured spot inner.

Length 59cm/23.2in.
Sizes 34-52.

Grey **MW0650**

4. NEW LADIES WAISTCOAT

Functional jetted pockets, adjustable back, fully lined with textured spot inner.

Length 53.5cm/21in.
Sizes 6-26.

Grey **FW0830**

5. NEW LADIES NOTCH NECK JACKET

Functional jetted pockets, fully lined with textured spot inner, spot sleeve and striped piping.

Length 62cm/24.4in.
Sizes 6-26.

Grey **FJ1840**

6. NEW MEN'S FLAT FRONT MODERN FIT TROUSER

Front zip fastening, side pockets, back pocket, half lined, belt loops, permanent trouser crease and Responsive Waistband.

Length 82cm/32.3in.
Sizes 26-50.

Grey **MT1380**

Long: 83.5cm/33in **MT1390**

7. NEW SKIRT

Drop waist styling, centre front seam detail, centre back zip and pleat vent, fully lined.

Length 58.5cm/23in.
Sizes 6-26.

Grey **FS1270**

ALL IN OUR LATEST FABRIC

66% Polyester, 33% Viscose, 1% Lycra with stain resistant Teflon®, 100% Polyester Lining. Machine washable at 40°.



2/3.

4.

For shirt see page 100.

For tie see page 245.

1/5.

2/3/6.

4/7.



1. For blouse see page 83.

1. NEW LADIES NOTCH NECK JACKET
Functional jetted pockets, fully lined with textured spot inner, spot sleeve and striped piping.
Length 62cm/24.4in.
Sizes 6-26.
Plum **FJ1650**

2. NEW LADIES SLIM LEG TROUSER
Drop waist styling, slim leg, front zip fastening, half lined, side pockets, belt loops, permanent trouser crease and Responsive Waistband.
Sizes 6-26.
Plum Length 73.5cm/29in. **FT3290**
Unhemmed inside leg 89cm/35in. **FT3300**

1/2.

3. For shirt see page 106.

3/4.

1/5.

6.

3. NEW MEN'S MODERN FIT JACKET
Single-breasted, functional jetted pockets with flaps, internal breast pockets and mobile phone pocket, fully lined with textured spot inner, spot sleeve and striped piping.
Length 74cm/29in.
Sizes 34-52.
Plum **MJ1130**

4. NEW MEN'S FLAT FRONT MODERN FIT TROUSER
Front zip fastening, side pockets, back pocket, half lined, belt loops, permanent trouser crease and Responsive Waistband.
Sizes 28-50.
Plum Regular: 78.5cm/31in **MT1400**
Long: 83.5cm/33in **MT1410**

5. NEW SKIRT
Drop waist styling, centre front seam detail, centre back zip and pleat vent, fully lined.
Length 58.5cm/23in.
Sizes 6-26.
Plum **FS1280**

6. NEW SLASH NECK DRESS
Semi-fitted, capped sleeve, slash neckline, centre back zip, decorative shaping seams around the front bust, back darts, fully lined.
Length 100cm/39.4in.
Sizes 6-26.
Plum **FD2990**

ALL IN OUR LATEST FABRIC
66% Polyester, 33% Viscose, 1% Lycra with stain resistant Teflon®. 100% Polyester Lining. Machine washable at 40°.



3.
For shirt see
page 106

Understated chic with a touch of contemporary style



1. NEW MEN'S WAISTCOAT

Functional jetted pockets, adjustable back, fully lined with textured spot inner.

Length 59cm/23.2in.
Sizes 34-52.

Plum **MW0660**

2. NEW MEN'S FLAT FRONT MODERN FIT TROUSER

Front zip fastening, side pockets, back pocket, half lined, belt loops, permanent trouser crease and Responsive Waistband.

Length 78.5cm/31in **MT1400**
Long: 83.5cm/33in **MT1410**

3. NEW LADIES WAISTCOAT

Functional jetted pockets, adjustable back, fully lined with textured spot inner.

Length 53.5cm/21in.
Size 6-26.

Plum **FW0640**

4. NEW LADIES SLIM LEG TROUSER

Drop waist styling, slim leg, front zip fastening, half lined, side pockets, belt loops, permanent trouser crease and Responsive Waistband.

Length 73.5cm/29in **FT3290**
Unhemmed inside leg 89cm/35in **FT3300**

ALL IN OUR LATEST FABRIC

66% Polyester, 33% Viscose,
1% Lycra with stain resistant Teflon®.
100% Polyester Lining.
Machine washable at 40°.

1.
For shirt see
page 106.

1.
NEW



1. NEW RUFFLE FRONT DRESS

Slash neckline, front ruffle detail, front bust and waist darts, back darts, centre back zip and vent, fully lined Qualitas skirt and Crêpe de Chine top.

Length 100cm/39.4in.
Top: 100% Polyester.

Grey/Charcoal **FD3090**

2. LADIES ONE BUTTON JACKET

Our longest jacket style with a more generous fit. Ideal for job roles that involve lots of standing, bending and moving.

Single-breasted, functional jetted pockets with flaps. Fully lined with paisley inner, spot sleeve and contrast piping.

Length 88.5cm/27in. **FJ0940**

3. LADIES TWO BUTTON JACKET

Our shortest style with princess seams to the front and back giving a sleek modern, figure flattering shape. A good choice for job roles that involve a lot of sitting.

Single-breasted, functional jetted pockets with flaps. Fully lined with paisley inner, spot sleeve and contrast piping.

Length 61.5cm/24in. **FJ1300**

4. LADIES THREE BUTTON JACKET

Featuring a narrow collar and lapel and angled pockets for a streamlined look. The twin back seams and centre back vent allow room to move, while the higher button fastening position ensures modesty.

Single-breasted, functional jetted pockets with flaps. Fully lined with paisley inner, spot sleeve and contrast piping.

Length 64.5cm/25.5in. **FJ1330**

5. WAISTCOAT

Fabric back and front, functional jetted pockets. Fully lined with paisley inner.

Length 63.5cm/21in. **FW0460**

6. SKIRT

Drop waist styling, centre back zip and vent, fully lined.

Length 59cm/23in. **FS0850**
Length 64cm/25in. **FS1120**

7. NOTCH NECKLINE DRESS

Semi-fitted, short sleeve, slit neckline, centre back zip fastening, back darts, fully lined.

Length 100cm/39.5in. **FD2610**

8. SQUARE NECKLINE DRESS

Semi-fitted, short sleeve, square neckline, centre back zip fastening, decorative double band around centre front, back darts, fully lined.

Length 100cm/39.5in. **FD2160**

9. LADIES STRAIGHT LEG TROUSER

Sitting slightly higher on the hips, the deeper waistband and double button fastening make these trousers suitable for a wide range of shapes and sizes. The wider leg line and straight styling elongate the silhouette while providing freedom of movement.

Front zip fastening, half lined, side pockets, belt loops and Responsive Waistband.

Short: 74cm/29in. **FT1980**
Regular: 79cm/31in. **FT1990**
Long: 84cm/33in. **FT2000**
Unhemmed inside leg 91.5cm/36in. **FT2040**

10. LADIES BOOTCUT TROUSER

Slightly more generous in the waist and hips and sitting lower on the waist. The tapered leg line narrows at the knee, providing a flattering shape.

Drop waist styling, front zip fastening, half lined, side pockets, belt loops and Responsive Waistband.

Short: 74cm/29in. **FT1980**
Regular: 79cm/31in. **FT1990**
Long: 84cm/33in. **FT1910**

11. LADIES SLIM LEG TROUSER

Flattering drop waist and classic flat front cigarette styling create a sleek modern look. The narrow leg line cut to finish on the ankle means you can wear these trousers with heels or flats.

Slim leg, front zip fastening, half lined, side pockets, belt loops and Responsive Waistband.

Length 74cm/29in. **FT2900**
Unhemmed inside leg 89cm/35in. **FT2910**

THE SJ WOMEN'S QUALITAS COLLECTION IN CHARCOAL

54% Polyester, 44% Wool, 2% Lycra® with stain resistant Teflon®.
Machine washable at 40°. Sizes 6-26.



2. LADIES ONE BUTTON JACKET
Length 88.5cm/27in.

3. LADIES TWO BUTTON JACKET
Length 61.5cm/24in.

4. LADIES THREE BUTTON JACKET
Length 64.5cm/25.5in.



5. WAISTCOAT

6. SKIRT

7. NOTCH NECKLINE DRESS

8. SQUARE NECKLINE DRESS



9. LADIES STRAIGHT LEG TROUSER

10. LADIES BOOTCUT TROUSER

11. LADIES SLIM LEG TROUSER



3.

11.



1.

2.

1. WAISTCOAT
Fabric back and front, functional jetted pockets. Fully lined with palesey inner.
Length 53.5cm/21in. **FW0410**

2. SKIRT
Drop waist styling, centre back zip and vent, fully lined.
Length 59cm/23in. **FS0780**
Length 64cm/25in. **FS1080**

3. LADIES ONE BUTTON JACKET
Our longest jacket style with a more generous fit. Ideal for job roles that involve lots of standing, bending and moving.
Single breasted, functional jetted pockets with flaps. Fully lined with palesey inner, spot sleeve and contrast piping.
Petite: 65.5cm/26in. **FJ1230**
Regular: 66.5cm/27in. **FJ0950**

4. LADIES TWO BUTTON JACKET
Our shortest style with princess seams to the front and back giving a sleek modern, figure flattering shape. A good choice for job roles that involve a lot of sitting.
Single breasted, functional jetted pockets with flaps. Fully lined with palesey inner, spot sleeve and contrast piping.
Length 64.5cm/25.5in. **FJ1280**

5. LADIES THREE BUTTON JACKET
Featuring a narrow collar and lapel and angled pockets for a streamlined look. The twin back seams and centre back vent allow room to move while the higher button fastening position ensures modesty.
Single-breasted, functional jetted pockets with flaps. Fully lined with palesey inner, spot sleeve and contrast piping.
Length 64.5cm/25.5in. **FJ1310**

6. LADIES STRAIGHT LEG TROUSER
Sitting slightly higher on the hips, the deeper waistband and double button fastening make these trousers suitable for a wide range of shapes and sizes. The wider leg line and straight styling elongate the silhouette while providing freedom of movement.
Front zip fastening, half lined, side pockets, belt loops and Responsive Waistband.
Short: 74cm/29in. **FT1920**
Regular: 79cm/31in. **FT1930**
Long: 84cm/33in. **FT1940**
Unhemmed inside leg 91.5cm/36in. **FT2030**

7. LADIES BOOTCUT TROUSER
Slightly more generous in the waist and hips and sitting lower on the waist. The tapered leg line narrows at the knee, providing a flattering shape.
Drop waist styling, front zip fastening, half lined, side pockets, belt loops and Responsive Waistband.
Short: 74cm/29in. **FT1830**
Regular: 79cm/31in. **FT1840**
Long: 84cm/33in. **FT1850**

8. LADIES SLIM LEG TROUSER
Flattering drop waist and classic flat front cigarette styling create a sleek modern look. The narrow leg line, cut to finish on the ankle, means you can wear these trousers with heels or flats.
Slim leg, front zip fastening, half lined, side pockets, belt loops and Responsive Waistband.
Length 74cm/29in. **FT2860**
Unhemmed inside leg 88cm/35in. **FT2870**

9. NOTCH NECKLINE DRESS
Semi-fitted, short sleeve, slit neckline, centre back zip fastening, back darts, fully lined.
Length 100cm/39.5in. **FD2590**

10. SQUARE NECKLINE DRESS
Semi-fitted, short sleeve, square neckline, centre back zip fastening, decorative double band around centre front, back darts, fully lined.
Length 100cm/39.5in. **FD0910**

11. NEW RUFFLE FRONT DRESS
Slash neckline, front ruffle detail, front bust and waist darts, back darts, centre back zip and vent, fully lined Qualitas skirt and Crêpe de Chine.
Length 100cm/39.4in.
Top: 100% Polyester.
Plum/Black **FD3000**

THE SJ WOMEN'S QUALITAS COLLECTION IN BLACK

54% Polyester, 44% Wool, 2% Lycra® with stain resistant Teflon®.
Machine washable at 40°. Sizes 6-26.



3. LADIES ONE BUTTON JACKET
Length 66.5cm/27in.



4. LADIES TWO BUTTON JACKET
Length 61.5cm/24in.



5. LADIES THREE BUTTON JACKET
Length 64.5cm/25.5in.



6. LADIES STRAIGHT LEG TROUSER



7. LADIES BOOTCUT TROUSER



8. LADIES SLIM LEG TROUSER



9. NOTCH NECKLINE DRESS



10. SQUARE NECKLINE DRESS



11. NEW RUFFLE FRONT DRESS



3.

7.



3.

7.

1. LADIES ONE BUTTON JACKET

Our longest jacket style with a more generous fit. Ideal for job roles that involve lots of standing, bending and moving.

Single-breasted, functional jetted pockets with flaps. Fully lined with paisley inner, spot sleeve and contrast piping.

Length 68.5cm/27in. **FJ0480**

2. LADIES TWO BUTTON JACKET

Our shortest style with princess seams to the front and back giving a sleek modern, figure flattering shape. A good choice for job roles that involve a lot of sitting.

Single-breasted, functional jetted pockets with flaps. Fully lined with paisley inner, spot sleeve and contrast piping.

Length 61.5cm/24in. **FJ1290**

3. LADIES THREE BUTTON JACKET

Featuring a narrow collar and lapel and angled pockets for a streamlined look. The twin back seams and centre back vent allow room to move while the higher button fastening position ensures modesty.

Single-breasted, functional jetted pockets with flaps. Fully lined with paisley inner, spot sleeve and contrast piping.

Length 64.5cm/25.5in. **FJ1320**

4. WAISTCOAT

Fabric back and front, functional jetted pockets. Fully lined with paisley inner.

Length 63.5cm/21in. **FW0390**

5. SKIRT

Drop waist styling, centre back zip and vent, fully lined.

Length 59cm/23in. **FS0480**
Length 64cm/25in. **FS1100**

6. SQUARE NECKLINE DRESS

Semi-fitted, short sleeve, square neckline, centre back zip fastening, decorative double band around centre front, back darts, fully lined.

Length 100cm/39.5in. **FD1130**

7. NEW RUFFLE FRONT DRESS

Slash neckline, front ruffle detail, front bust and waist darts, back darts, centre back zip and vent, fully lined Qualitas skirt and Crépe de Chine top.

Length 100cm/39.4in.
Top: 100% Polyester.
Cobalt blue/Navy **FD3080**

8. LADIES STRAIGHT LEG TROUSER

Sitting slightly higher on the hips, the deeper waistband and double button fastening makes these trousers suitable for a wide range of shapes and sizes. The wider leg line and straight styling elongate the silhouette while providing freedom of movement.

Front zip fastening, half lined, side pockets, belt loops and Responsive Waistband.

Short: 74cm/29in. **FT1960**
Regular: 79cm/31in. **FT1980**
Long: 84cm/33in. **FT1970**

9. LADIES BOOTCUT TROUSER

Slightly more generous in the waist and hips and sitting lower on the waist. The tapered leg line narrows at the knee, providing a flattering shape.

Drop waist styling, front zip fastening, half lined, side pockets, belt loops and Responsive Waistband.

Short: 74cm/29in. **FT1860**
Regular: 79cm/31in. **FT1870**
Long: 84cm/33in. **FT1880**

10. LADIES SLIM LEG TROUSER

Flattering drop waist and classic flat front cigarette styling create a sleek modern look. The narrow leg line cut to finish on the ankle means you can wear these trousers with heels or flats.

Slim leg, front zip fastening, half lined, side pockets, belt loops and Responsive Waistband.

Length 74cm/29in. **FT2920**
Unhemmed inside leg 89cm/35in. **FT2930**

11. NOTCH NECKLINE DRESS

Semi-fitted, short sleeve, slit neckline, centre back zip fastening, back darts, fully lined.

Length 100cm/39.5in. **FD2980**

THE SJ WOMEN'S QUALITAS COLLECTION IN DARK NAVY

54% Polyester, 44% Wool, 2% Lycra® with stain resistant Teflon®.
Machine washable at 40°. Sizes 6-26.



1. LADIES ONE BUTTON JACKET
Length 68.5cm/27in.



2. LADIES TWO BUTTON JACKET
Length 61.5cm/24in.



3. LADIES THREE BUTTON JACKET
Length 64.5cm/25.5in.



4. WAISTCOAT



5. SKIRT



6. SQUARE NECKLINE DRESS



7. NEW RUFFLE FRONT DRESS



8. LADIES STRAIGHT LEG TROUSER



9. LADIES BOOTCUT TROUSER



10. LADIES SLIM LEG TROUSER



11.

Plum/Black



Cobalt blue/Navy



Grey/Charcoal



NEW THIS SEASON

FASHION in *comfort*

A dress designed with a chic silhouette, in fabric that keeps you cool and collected.

NEW RUFFLE FRONT DRESS
 Slash neckline, front ruffle detail, front bust and waist darts, back darts, centre back zip and vent, fully lined. Quality skirt and Crêpe de Chine top.

Length 100cm/39.4in.
 Top: 100% Polyester.
 Skirt: 54% Polyester, 44% Wool, 2% Lycra® with stain resistant Teflon®. 40° wash.
 Sizes 6-26.

Plum/Black	FD3000
Cobalt blue/Navy	FD3080
Grey/Charcoal	FD3090

“ *This dress is designed to look like two separate pieces while working as one, letting you get that professional style while maintaining easy care and a smooth silhouette.* ”



HELEN
HARKER,
DESIGN
MANAGER





1.

2.

THE SJ MEN'S QUALITAS COLLECTION IN CHARCOAL

54% Polyester, 44% Wool, 2% Lycra® with stain resistant Teflon®.
Machine washable at 40°



**3. MEN'S CLASSIC FIT
THREE BUTTON JACKET**



**4. MEN'S MODERN FIT
TWO BUTTON JACKET**



**5. MEN'S CLASSIC FIT
FRONT PLEAT TROUSER**



**2. MEN'S MODERN FIT
FRONT TROUSER**

1. WAISTCOAT
Fabric back and front, functional jetted pockets, adjustable back, fully lined with paisley inner. Length 59cm/23.5cm.
Sizes 34-54. **MW0490**

2. MEN'S MODERN FIT FLAT FRONT TROUSER
Designed to give a closer slimmer fit without compromising on comfort. Sitting slightly lower on the hips with a tapered leg styling.
Front zip fastening, side pockets, back pocket, half lined, belt loops and Responsive Waistband. Sizes 26-46.
Short: 74cm/29in. **MT0750**
Regular: 79cm/31in. **MT0760**
Long: 84cm/33in. **MT0770**

3. MEN'S CLASSIC FIT THREE BUTTON JACKET
A more generous silhouette from the shoulders to the waist provides a traditional look.
Single-breasted, functional jetted pockets with flaps, internal breast pockets and mobile phone pocket, fully lined with paisley inner, spot sleeve and contrast piping. Length 80cm/31.5in.
Sizes 34-52. **MJ0870**

4. MEN'S MODERN FIT TWO BUTTON JACKET
Slimmer fitting with narrow lapels and tapered sleeves and waist give this jacket a streamlined modern look. Two vents to the back.
Single-breasted, functional jetted pockets with flaps, internal pockets and mobile phone pocket, fully lined with paisley inner, spot sleeve and contrast piping. Length 78.5cm/31in.
Sizes 34-54. **MJ0830**

5. MEN'S CLASSIC FIT FRONT PLEAT TROUSER
Slightly more generous than the modern fit trousers, with more fabric tailored into the upper section and thigh for extra comfort and practicality.
Front zip fastening, side pockets, back pocket, half lined, belt loops and Responsive Waistband. Sizes 28-50.
Short: 74cm/29in. **MT0840**
Regular: 79cm/31in. **MT0850**
Long: 84cm/33in. **MT0860**
Unhemmed inside leg 91.5cm/36in. **MT0900**



For shirt see page 70.
For tie see page 245.
1/4.

1.

1. MEN'S CLASSIC FIT THREE BUTTON JACKET
A more generous silhouette from the shoulders to the waist provides a traditional look.

Single-breasted, functional jetted pockets with flaps, internal breast pockets and mobile phone pocket, fully lined with paiseley inner, spot sleeve, contrast piping. Sizes 34-52.

Regular 80cm/31.5in **MJ0840**
Long 85cm/33.5in **MJ0850**

2. MEN'S MODERN FIT TWO BUTTON JACKET
Slimmer fitting with narrow lapels and tapered sleeves and waist give this jacket a streamlined modern look. Two vents to the back.

Single-breasted, functional jetted pockets with flaps, internal breast pockets and mobile phone pocket, fully lined with paiseley inner, spot sleeve and contrast piping. Length 78.5cm/31in.

Sizes 34-54. **MJ0810**

3. MEN'S WAISTCOAT
Fabric back and front, functional jetted pockets, adjustable back, fully lined with paiseley inner. Length 59cm/23.25in.

Sizes 34-54. **MW0400**

4. MEN'S CLASSIC FIT FRONT PLEAT TROUSER
Slightly more generous than the modern fit trousers, with more fabric tailored into the upper section and thigh for extra comfort and practicality.

Front zip fastening, side pockets, back pocket, half lined, belt loops and Responsive Waistband. Sizes 28-50.

Short 74cm/29in **MT0780**
Regular 79cm/31in **MT0790**
Long 84cm/33in **MT0800**
Unhemmed inside leg 91.5cm/36in **MT0890**

5. MEN'S MODERN FIT FLAT FRONT TROUSER
Designed to give a closer slimmer fit without compromising on comfort. Sitting slightly lower on the hips with a tapered leg styling.

Front zip fastening, side pockets, back pocket, half lined, belt loops and Responsive Waistband. Sizes 28-46.

Short: 74cm/29in **MT0690**
Regular: 79cm/31in **MT0700**
Long: 84cm/33in **MT0710**

THE SJ MEN'S QUALITAS COLLECTION IN BLACK

54% Polyester, 44% Wool, 2% Lycra® with stain resistant Teflon®.
Machine washable at 40°.

4.

For shirt see page 70.
For tie see page 245.



1.

4.

THE SJ MEN'S QUALITAS COLLECTION IN DARK NAVY

54% Polyester, 44% Wool, 2% Lycra® with stain resistant Teflon®.
Machine washable at 40°.



1. MEN'S MODERN FIT TWO BUTTON JACKET



2. MEN'S CLASSIC FIT THREE BUTTON JACKET



3. WAISTCOAT



4. MEN'S MODERN FIT FLAT FRONT TROUSER



5. MEN'S CLASSIC FIT FRONT PLEAT TROUSER

1. MEN'S MODERN FIT TWO BUTTON JACKET
Slimmer fitting with narrow lapels and tapered sleeves and waist give this jacket a streamlined modern look. Two vents to the back.

Single-breasted, functional jetted pockets with flaps, internal breast pockets and mobile phone pocket, fully lined with paisley inner, spot sleeve and contrast piping. Length: 78.5cm/31in.

Sizes 34-54. **MJ0820**

2. MEN'S CLASSIC FIT THREE BUTTON JACKET
A more generous silhouette from the shoulders to the waist provides a traditional look.

Single-breasted, functional jetted pockets with flaps, internal breast pockets and mobile phone pocket, fully lined with paisley inner, spot sleeve and contrast piping. Length: 80cm/31.5in.

Sizes 34-52. **MJ0860**

3. WAISTCOAT
Fabric back and front, functional jetted pockets, adjustable back, fully lined with paisley inner. Length: 59cm/23.25in.

Sizes 34-54. **MW0460**

4. MEN'S MODERN FIT FLAT FRONT TROUSER
Designed to give a closer, slimmer fit without compromising on comfort. Sitting slightly lower on the hips with a tapered leg styling.

Front zip fastening, side pockets, back pocket, half lined, belt loops and Responsive Waistband. Sizes 28-46.

Short: 74cm/29in. **MT0720**
Regular: 79cm/31in. **MT0730**
Long: 84cm/33in. **MT0740**

5. MEN'S CLASSIC FIT FRONT PLEAT TROUSER
Slightly more generous than the modern fit trousers, with more fabric tailored into the upper section and thigh for extra comfort and practicality.

Front zip fastening, side pockets, back pocket, half lined, belt loops and Responsive Waistband. Sizes 28-50.

Short: 74cm/29in. **MT0810**
Regular: 79cm/31in. **MT0820**
Long: 84cm/33in. **MT0830**



1.

For shirt see page 76.

4.

1. NEW

2. NEW

4. NEW

For shirts see pages 100-105.

5. NEW

3. NEW

6. LADIES STRAIGHT LEG TROUSER

Charcoal chalkstripe fabric

MEN'S & LADIES CHARCOAL CHALKSTRIPE QUALITAS COLLECTION, IN NEW MODERN STYLES

54% Polyester, 44% Wool, 2% Lycra® with stain resistant Teflon®.
Machine washable at 40°.

1. NEW MEN'S MODERN FIT TWO BUTTON JACKET
Slimmer fitting with narrow lapels and tapered sleeves and waist give this jacket a streamlined modern look. Two vents to the back.

Single-breasted, functional jitted pockets with flaps, internal pockets and mobile phone pocket, fully lined with paisley inner, spot sleeve and contrast piping.
Length 78.5cm/31in.

Sizes 34-52. **MJ1150**

5. NEW LADIES SLIM LEG TROUSER
Flattering drop waist and classic flat front cigarette styling create a sleek modern look. The narrow leg line cut to finish on the ankle means you can wear these trousers with heels or flats.

Sim leg, front zip fastening, half lined, side pockets, belt loops and Responsive Waistband.
Sizes 6-26.

Unhemmed inside leg 88cm/35in. **FT3320**

2. NEW MEN'S MODERN FIT FLAT FRONT TROUSER
Designed to give a closer slimmer fit without compromising on comfort. Sitting slightly lower on the hips with a tapered leg styling.

Front zip fastening, side pockets, back pocket, half lined, belt loops and Responsive Waistband.
Unhemmed inside leg 89cm/35in.

Sizes 29-44. **MT1430**

6. LADIES STRAIGHT LEG TROUSER
Sitting slightly higher on the hips, the deeper waistband and double button fastening make these trousers suitable for a wide range of shapes and sizes. The wider leg line and straight styling elongate the silhouette while providing freedom of movement.

Drop waist styling, front zip fastening, half lined, side pockets, belt loops and Responsive Waistband.
Sizes 6-26.

Unhemmed inside leg 88cm/35in. **FT2010**

3. NEW MEN'S WAISTCOAT
Fabric back and front, functional jitted pockets, adjustable back, fully lined with paisley inner.
Length 59cm/23.5in.

Sizes 34-52. **MW0680**

7. NEW LADIES TWO BUTTON JACKET
Our shortest style with princess seams to the front and back giving a sleek modern, figure flattering shape. A good choice for job roles that involve a lot of sitting.

Single-breasted, functional jitted pockets with flaps. Fully lined with paisley inner, spot sleeve and contrast piping.
Length 61.5cm/24in.

Sizes 6-26. **FJ1670**

4. NEW LADIES WAISTCOAT
Fabric back and front, functional jitted pockets. Fully lined with paisley inner.
Length 53.5cm/21in.


Sizes 6-26. **FW0680**

8. SKIRT
Drop waist styling, centreback zip and vent, fully lined.
Length 59cm/23in.

Sizes 6-26. **FS0730**

7. NEW

8.



1. NEW

2. NEW

MEN'S & LADIES NAVY DUO STRIPE QUALITAS COLLECTION, IN NEW MODERN STYLES

54% Polyester, 44% Wool, 2% Lycra® with stain resistant Teflon®.
Machine washable at 40°.

1. NEW MEN'S WAISTCOAT
Fabric back and front, functional jitted pockets, adjustable back, fully lined with paisley inner.
Length 68cm/23.5in.
Sizes 34-52. **MW0670**

2. NEW MEN'S MODERN FIT FLAT FRONT TROUSER
Designed to give a closer slimmer fit without compromising on comfort. Sitting slightly lower on the hips with a tapered leg styling.
Front zip fastening, side pockets, back pocket, half lined, belt loops and Responsive Waistband.
Unhemmed inside leg 89cm/35in.
Sizes 28-44. **MT1420**

3. NEW LADIES TWO BUTTON JACKET
Our shortest style with princess seams to the front and back giving a sleek modern, figure flattering shape. A good choice for job roles that involve a lot of sitting.
Single-breasted, functional jitted pockets with flaps. Fully lined with paisley inner, spot sleeve and contrast piping.
Length 61.5cm/24in.
Sizes 6-26. **FJ1660**


4. NEW LADIES SLIM LEG TROUSER
Flattering drop waist and classic flat front cigarette styling create a sleek modern look. The narrow leg line cut to finish on the ankle means you can wear these trousers with heels or flats.
Slim leg, front zip fastening, half lined, side pockets, belt loops and Responsive Waistband.
Sizes 6-26.
Unhemmed inside leg 89cm/35in. **FT3310**

5. LADIES STRAIGHT LEG TROUSER
Sitting slightly higher on the hips, the deeper waistband and double button fastening makes these trousers suitable for a wide range of shapes and sizes. The wider leg line and straight styling elongate the silhouette while providing freedom of movement.
Drop waist styling, front zip fastening, half lined, side pockets, belt loops and Responsive Waistband.
Sizes 8-26.
Unhemmed inside leg 89cm/35in. **FT2020**


6. NEW LADIES WAISTCOAT
Fabric back and front, functional jitted pockets. Fully lined with paisley inner.
Length 63.5cm/21 in.
Sizes 6-26. **FW0650**

7. SKIRT
Drop waist styling, contiback zip and vent, fully lined.
Length 59cm/23in.
Sizes 6-26. **FS0880**


8. NEW MEN'S MODERN FIT TWO BUTTON JACKET
Slimmer fitting with narrow lapels and tapered sleeves and waist give this jacket a streamlined modern look. Two vents to the back.
Single-breasted, functional jitted pockets with flaps, internal pockets and mobile phone pocket, fully lined with paisley inner, spot sleeve and contrast piping.
Length 78.5cm/31 in.
Sizes 34-52. **MJ1140**




3. NEW




4. NEW




5. LADIES STRAIGHT LEG TROUSER




6. NEW
For blouse see page 62.



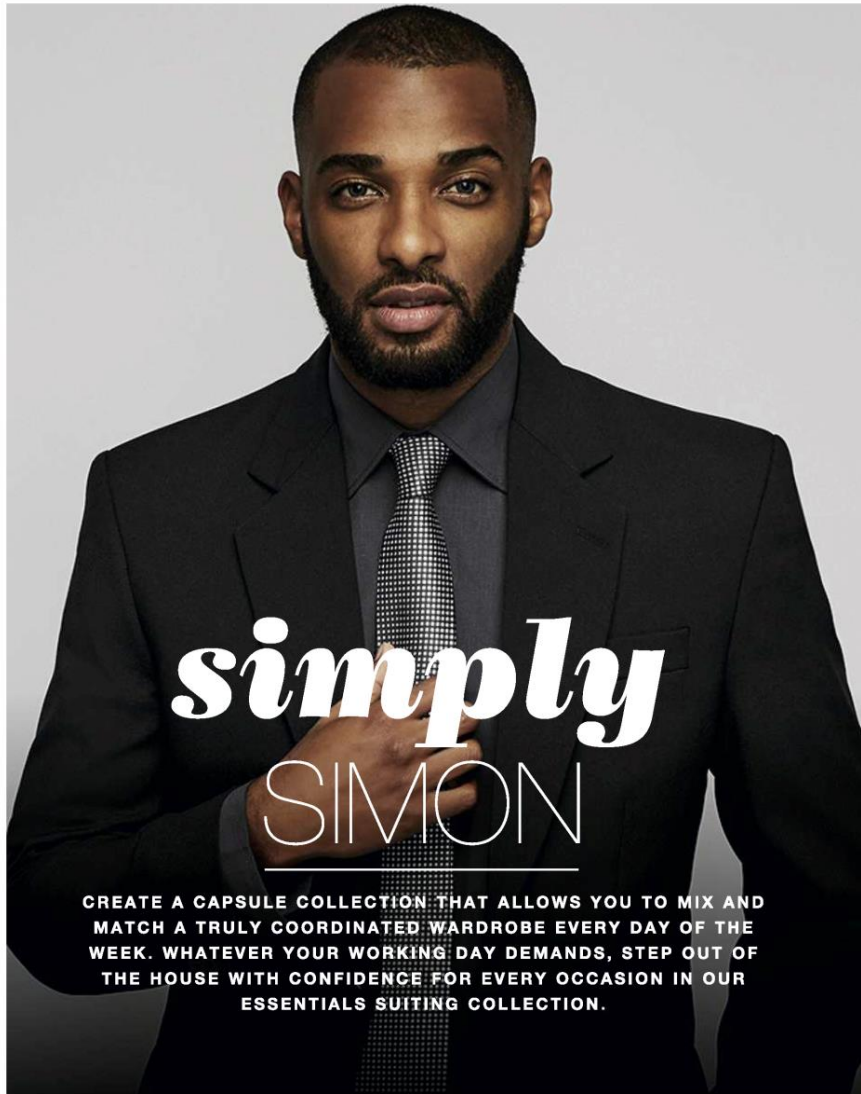
7.



8. NEW
For shirt see page 62.
For tie see page 245.



Navy duo stripe fabric



CLASSIC HOSPITALITY

CHOOSE AN ENSEMBLE YOU CAN RELY ON WITH DURABLE FABRICS, EASY CARE AND COMFORTABLE DESIGN TO KEEP YOU LOOKING SMART EVERY SINGLE DAY.



1. MEN'S TWO BUTTON JACKET
Single breasted, functional jetted pockets, functional breast pocket, inside pockets, mobile phone pocket, no vents, fully lined.

Length 79cm/31in.
100% Polyester. Easy care.
Two way stretch.
30° wash.
Size 34-62.

Black **MJ0090**
Navy **MJ0700**

2. LONG SLEEVE MODERN FIT CHAMBRAY SHIRT
Made from a lightweight chambray fabric, this shirt's flattering fitted body and semi-curved collar combine to create this modern take on a classic cut. Front button fastening and cuffs.

60% Cotton, 40% Polyester.
30° wash.
Size 14.5in-19in.

Charcoal **MS1440**
Sage **MS1460**

3. MEN'S FLAT FRONT TROUSER
Front zip fastening, side pockets, back welt pocket with button and loop.

Unhemmed inside leg
89cm/35in. 100% Polyester.
Easy care. Two way stretch.
30° wash.
Size 28-50.

Black **MT0640**

MAKE A STATEMENT

GIVE YOUR EVERYDAY UNIFORM AN UPGRADE FOR IMPORTANT MEETINGS, WITH STYLISH ACCESSORIES AND EXTRAS.



styling tip

Opt for a look that's even more classic with a crisp white shirt. See page 100.



4. MEN'S CLASSIC WAISTCOAT
Fabric back and front, functional welt pockets, six button fastening.

100% Polyester. 30° wash.
Size 34-62.

Black **MW0290**

6. MEN'S ONE FRONT PLEAT TROUSER
Front zip fastening, side pockets, back pocket.

Unhemmed inside leg
89cm/35in. 100% Polyester.
Easy care. Two way stretch.
30° wash.
Size 28-50.

Black **MT0240**
Navy **MT0230**

5. GEOMETRIC SPOT TIE
Length 146cm/57.5in.
100% Polyester. One size.

Grey **T11480**
Green **T11440**

Items 3 & 6 Free iron on hem tape pack with all unhemmed trousers – a great solution that allows you to easily hem trousers to required length.



ESSENTIALS COLLECTION

EVERYDAY ELEGANCE

ENSURE YOUR MORNINGS ARE EASY WITH A SIGNATURE OUTFIT THAT'S PERFECTLY COORDINATED, GIVING YOU A PROFESSIONAL FINISH AND COMFORTABLE FEEL.



styling tip

Heels can be stylish and comfortable together with a well-croset court shoe. See page 241.



1. LADIES ONE BUTTON JACKET

Single-breasted, collar and rever, functional jetted pockets with flaps, in breast pocket, fully lined.

Length 68.5cm/27in. 100% Polyester. Easy care. Two way stretch. 30° wash. Sizes 6-26.

Black **FJ0800**
Navy **FJ0830**

2. NEW SLASH NECK BLOUSE

Slash neckline, grown-on kimono style sleeve.

Length 61cm/24in. 100% Polyester. Crêpe de Chine. Easy care. Minimum iron. 40° wash. Sizes 6-26.

Cream **FB4650**

3. ESSENTIALS LADIES PARALLEL LEG TROUSER

Drop waist styling, flat front, front zip fastening.

Unhemmed inside leg 89cm/35in. 100% Polyester. Easy care. Two way stretch. 30° wash. Sizes 6-26.

Black **FT1730**
Navy **FT1810**

4. MODERN FIT LONG SLEEVE BLOUSE WITH STRETCH

A blouse that works as hard as you do. Princess seams and bust darts improve fit, with stylish concealed front button fastening and back body darts.

60% Cotton, 35% Polyester, 5% Spandex®. 30° wash. Sizes 6-26.

White **FB0781**

SIGNATURE STYLE

MAKE AN IMPACT WITH A HEAD TO TOE OUTFIT THAT'S NEVER OUT OF STYLE. WITH A PROFESSIONAL SILHOUETTE YOU CAN ALWAYS FEEL CONFIDENT.



1/4.

3.

ESSENTIALS COLLECTION

FASHION FORWARD

FOR MOMENTS WHEN YOUR LOOK NEEDS A LITTLE EXTRA, ADD SOME FASHION INSPIRATION AND GREAT TAILORED DESIGN WITH THESE CLASSIC STYLES.



styling tip

Go bold with complementary colours, accessorising with this grey spot tie. See page 245.



1. LADIES CLASSIC WAISTCOAT

Fabric back and front, functional welt pockets, five button front fastening.

Length 53.5cm/21in.
100% Polyester. Easy care.
Two way stretch. 30° wash.
Sizes 6-26.

Black **FW0050**

2. LONG SLEEVE MODERN FIT CHAMBRAY BLOUSE

An open collar and puff sleeves add feminine flair to this semi-fitted, princess seamed blouse. Enjoy added comfort from the lightweight poly/cotton and button fastening cuffs.

Chambray: 55% Cotton,
45% Polyester. 30° wash.
Sizes 6-26.

Charcoal **FB3650**
Boysenberry **FB3660**

3. ESSENTIAL LADIES BOOTLEG TROUSER

Drop waist styling, flat front, zip fastening. Available in two lengths.

Unhemmed inside leg 86cm/35in.
100% Polyester. Easy care.
Two way stretch fabric.
30° wash.
Sizes 6-26.

Black **FT0520**
Navy **FT0510**

Hemmed inside leg 79cm/31in.
Black **FT1270**
Navy **FT1260**

4. SLIM LEG TROUSER

Drop waist styling, front zip fastening, flat front, side pockets, belt loops.

Length 74cm/29in.
100% Polyester. Easy care.
30° wash.
Sizes 6-26.

Black **FT2820**

Unhemmed inside leg 89cm/35in. Sizes 6-26.
Black **FT3020**

5. NEW SLASH NECK BLOUSE

Slash neckline, grown-on kimono style sleeves.

Length 61cm/24in.
100% Polyester. Crêpe de Chine.
Easy care. Minimum iron.
40° wash.
Sizes 6-26.

Cream **FB4650**

6. ESSENTIALS LADIES CLASSIC FLAT FRONT TROUSER

Straight leg, side back elastic, front slanted pockets and belt loops.

Unhemmed inside leg 86cm/35in.
100% Polyester. Easy care.
Two way stretch. 30° wash.
Sizes 6-26.

Black **FT0040**

Items 3, 4 & 6 Free iron-on hem tape pack with all unhemmed trousers – a great solution that allows you to easily hem trousers to required length.

WARDROBE ESSENTIALS

LET YOUR BASICS GO THE EXTRA MILE WITH FITS MADE TO FLATTER EVERY SHAPE. DRESS UP OR DOWN WITH HEELS OR FLATS.



1/2.

4.

EFFORTLESS COOL

ACHIEVE A CLASSIC ELEGANCE WITH MONOCHROME PIECES THAT ALWAYS COORDINATE SEAMLESSLY, AND LAYER EASILY WITH JACKETS AND ACCESSORIES.



5.
NEW

6.



1. ESSENTIALS LADIES DRESS
Semi-fitted, capped sleeve, square neckline, centre back zip fastening, double band around centre, fully lined.
Length 100cm/39.5in. 100% Polyester. Two way stretch fabric. Easy care. 40° wash. Sizes 6-26.

Black **FD1490**



2. PEPLUM TOP
Tailored to fit with added fashion flair from a peplum waist, the round neckline and capped short sleeve are understated and chic. Centre back zip fastening.
100% Polyester. Two way stretch fabric. Easy care. 40° wash. Sizes 6-20.

Black **FB3620**

Black **FS0620**
Navy **FS0700**

3. SKIRT
Form-fitted with flattering drop waist styling. Centre back zip and vent, fully lined for comfort.
Length 59cm/23in. 100% Polyester. Two way stretch fabric. Easy care. 40° wash. Sizes 6-26.

Black **FD2780**



CLASSICS in **black**

Choose separates or dress shapes for head to toe elegance, in modern or classic looks.



1.
For twill trousers
see page 234.

CLASSIC layering

Choose staples that are always in style with professional cut blazers in complementary colours. The ideal accessory to trousers, skirts or our chic patterned shift dress.



1.
For A-line shift dress
see page 55.



Button detail

1. LADIES JERSEY BLAZER
Layer up while staying cool with a casual, one button jacket. Features two functional jetted pockets with flaps, centre back vent and lined sleeves and shoulders.

Length 59cm/23in.
60% Viscose, 35% Nylon,
5% Elastane. 30° wash.
Sizes 6-20.

Blue
Orange
Black

FJ1600
FJ1590
FJ1610

2. SHIFT DRESS
Choose from three unique prints in this easy care, shape flattering crêpe dress. Featuring a slash neckline, cap sleeve with cuff and self fabric belt.

Length 94.5cm/37in.
100% Polyester. Cool Crêpe.
Easy Care. Minimum Iron.
30° wash.
Sizes 6-18.

Black and
white square

FD2670



1.
2.

1.



Black & white squares

1.



Grey shards

EXCLUSIVE TO SIMON JERSEY

MAKE an imprint

Compliments are sure to follow with our elegant and fashion forward print dresses.

1. SHIFT DRESS

Choose from three unique prints in this easy care, shape flattering crêpe dress. Featuring a slim neckline, cap sleeve with cuff and self fabric belt. (Belt shown not included).

Length 94.5cm/37in
100% Polyester, Cool Crêpe, Easy Care.
Minimum Iron, 30° wash.
Size 6-18.

Black and white square	FD2670
Grey shards	FD2650
Blue watercolour	FD2660

2. LADIES JERSEY BLAZER

Layer up while staying cool with a casual one button jacket. Features two functional jettied pockets with flaps, centre back vent and lined sleeves and shoulders.

Length 59cm/23in. 60% Viscose, 35% Nylon, 5% Elastane. 30° wash.
Size 6-20.

Orange	FJ1590
Blue	FJ1600
Black	FJ1610

Blue watercolour

1.
2.
Blue

For coordinating blouses see pages 87-92.



1.



1. PRESTIGE LONG SLEEVE HERRINGBONE BLOUSE

Open collar, semi-fitted and puff sleeve, princess seams at front and back.

100% Cotton. 30° wash.
Sizes 6-30.

Blue **FB2220**

Prestige

BLUE HERRINGBONE

2.

NEW & IMPROVED FIT

For tie see page 246.



3. PRESTIGE SHORT SLEEVE HERRINGBONE BLOUSE

Open collar, semi-fitted, capped puff sleeve, princess seams at front and back.

100% Cotton. 30° wash.
Sizes 8-20.

Blue **FB2540**

3.



2. PRESTIGE LONG SLEEVE HERRINGBONE SHIRT

Long sleeve with single double button notched cuff, cutaway collar with bones. Double yoke with centre back seam.

100% Cotton. 30° wash.
Sizes 14in-19in.

Blue **MS1910**



New and improved notched cuff detail.



Prestige
LILAC HERRINGBONE

1.
NEW &
IMPROVED FIT
For tie see
page 246.

Prestige
WHITE HERRINGBONE

3.



2.



3.

1. PRESTIGE LONG SLEEVE HERRINGBONE SHIRT

Long sleeve with single double button notched cuff, cutaway collar with bones. Double yoke with centre back seam.

100% Cotton. 30° wash.
Sizes 14in-19in.

Lilac **MS1920**
White **MS1900**

New and improved notched cuff detail.



2. PRESTIGE SHORT SLEEVE HERRINGBONE BLOUSE

Open collar, semi-fitted, capped puff sleeve, princess seams at front and back.

100% Cotton. 30° wash.
Size 8-26.

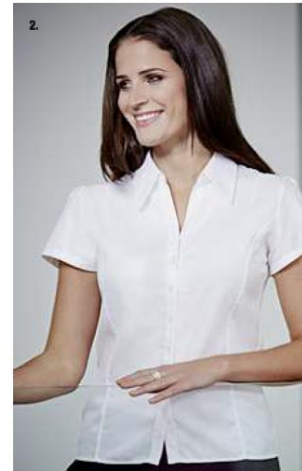
Lilac **FB3110**
White **FB2520**

3. PRESTIGE LONG SLEEVE HERRINGBONE BLOUSE

Open collar, semi-fitted and puff sleeve, princess seams at front and back.

100% Cotton. 30° wash.
Size 8-30.

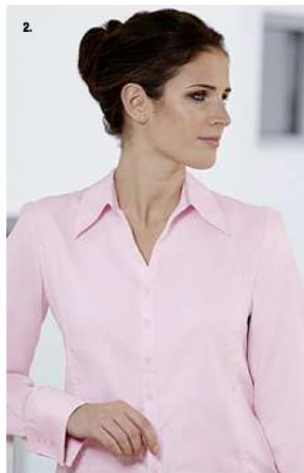
Lilac **FB2590**
White **FB2140**



2.



1.
NEW &
IMPROVED
FIT



1. PRESTIGE LONG SLEEVE HERRINGBONE SHIRT

Long sleeve with single double button notched cuff, cutaway collar with bones. Double yoke with centre back seam.

100% Cotton. 30° wash. Sizes 14in-19in.

Pink **MS1940**
Teal **MS1930**

New and improved notched cuff detail.



2. PRESTIGE LONG SLEEVE HERRINGBONE BLOUSE

Open collar, semi-fitted and puff sleeve, princess seams at front and back.

100% Cotton. 30° wash. Sizes 6-30.

Pink **FB2170**
Teal **FB2600**

3. PRESTIGE SHORT SLEEVE HERRINGBONE BLOUSE

Open collar, semi-fitted, capped puff sleeve, princess seams at front and back.

100% Cotton. 30° wash. Sizes 8-26.

Pink **FB2530**
Teal **FB3120**



CLASSIC oxfords

For casual or formal alike, rely on this classic, cotton rich shirt for a stylish feel.



1.



2.



3.



2.



3.

1. OXFORD LONG SLEEVE SHIRT

Semi-outaway collar. Chest patch pocket, two button adjustable cuff.

Oxford. 70% Cotton, 30% Polyester. 30° wash.

Size 14in-19in.
White **MS0650**

Size 14.5in-19in.
Blue **MS0630**

2. OXFORD LONG SLEEVE BLOUSE

Classic collar. Semi-fitted with front darts.

Oxford. 70% Cotton, 30% Polyester. 30° wash. Size 8-26.

White **FB0380**
Blue **FB0350**

3. OXFORD SHORT SLEEVE BLOUSE

Classic collar. Semi-fitted with front darts.

Oxford. 70% Cotton, 30% Polyester. 30° wash. Size 8-26.

White **FB2010**
Blue **FB2000**

4. OXFORD SHORT SLEEVE SHIRT

Button down collar, chest patch pocket.

Oxford. 70% Cotton, 30% Polyester. 30° wash. Size XS-XXL.

Blue **US0040**



1.



4.



1.

Charcoal Chambray

Boysenberry Chambray



3.
Accessorise with our Skinny Tie, see page 244.



2.



1.



4.



4.



2.

1. SHORT SLEEVE MODERN FIT BLOUSE

An open collar and short puff sleeves add feminine flair to this semi-fitted, princess seamed blouse. Enjoy added comfort from the lightweight polycotton chambray fabric. Button fastening on the front.

Length 64.5cm/25.5in. 60% Cotton, 40% Polyester. 30° wash. Sizes 8-26.

Charcoal **FB4540**
Boysenberry **FB4550**

2. SHORT SLEEVE MODERN FIT SHIRT

Lightweight polycotton chambray fabric, bold colour and modern cut combined. The shirt features a semi-outaway collar, fitted body for chic shape and front button fastening.

Length 80.5cm/31.5in. 60% Cotton, 40% Polyester. 30° wash. Sizes 14.5in-19in.

Charcoal **MS1770**
Boysenberry **MS1780**

3. LONG SLEEVE MODERN FIT SHIRT

Made from a lightweight chambray fabric, this shirt's flattering fitted body and semi-outaway collar combine to create a modern take on a classic cut. Front button fastening and cuffs.

Length 80.5cm/31.5in. 60% Cotton, 40% Polyester. 30° wash. Sizes 14.5in-19in.

Charcoal **MS1440**
Boysenberry **MS1450**

4. LONG SLEEVE MODERN FIT BLOUSE

Femininity meets practicality in a princess seamed blouse in chambray fabric. The open collar, puff sleeves and semi-fitted style are made to flatter. Button fastening on front and cuffs.

Length 64.5cm/25.5in. 60% Cotton, 40% Polyester. 30° wash. Sizes 8-26.

Charcoal **FB3650**
Boysenberry **FB3660**



3.

Navy Chambray



1. SHORT SLEEVE MODERN FIT SHIRT

Lightweight polycotton chambray fabric, bold colour and modern cut combined. The shirt features a semi-cutaway collar, fitted body for chic shape and front button fastening.

Length 80.5cm/31.5in. 60% Cotton, 40% Polyester. 30° wash. Sizes 14.5in-19in.

Navy **MS1840**
Sage **MS1790**

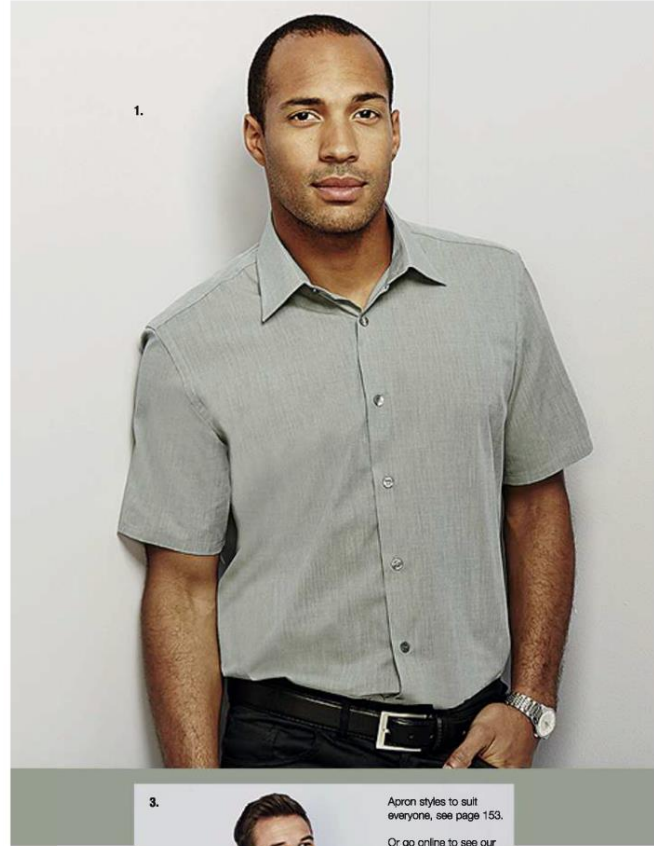
2. SHORT SLEEVE MODERN FIT BLOUSE

An open collar and short cuff sleeves add feminine flair to this semi-fitted, princess seamed blouse. Enjoy added comfort from the lightweight polycotton chambray fabric. Button fastening on the front.

Length 64.5cm/25.5in. 60% Cotton, 40% Polyester. 30° wash. Sizes 8-26.

Navy **FB4590**
Sage **FB4560**

Sage Chambray



Apron styles to suit everyone, see page 153.
Or go online to see our complete range of styles and colours.

3. LONG SLEEVE MODERN FIT SHIRT

Made from a lightweight chambray fabric, this shirt's flattering fitted body and semi-cutaway collar combine to create a modern take on a classic cut. Front button fastening and cuffs.

Length 80.5cm/31.5in. 60% Cotton, 40% Polyester. 30° wash. Sizes 14.5in-19in.

Navy **MS1830**
Sage **MS1460**

4. LONG SLEEVE MODERN FIT BLOUSE

Femininity meets practicality in a princess seamed blouse in chambray fabric. The open collar, puff sleeves and semi-fitted style are made to flatter. Button fastening on front and cuffs.

Length 64.5cm/25.5in. 60% Cotton, 40% Polyester. 30° wash. Sizes 8-26.

Navy **FB580**
Sage **FB3670**





MAKE A STATEMENT WITH PATTERNED SHIRTS THAT ARE EASY TO MIX AND MATCH WITH OUR COORDINATING CHAMBRAY SHIRTS & BLOUSES.

Match our Black & White print with the Charcoal Chambray on page 70.

1. LADIES PATTERNED SHIRT

Give a smart and chic shirt some added flair with patterned prints and classic semi-fitted tailoring. Features contrast Chambray trim inside collar, cuff and front placket.

Length 63cm/25in. 65% Polyester, 35% Cotton. 30° wash. Sizes 6-26.

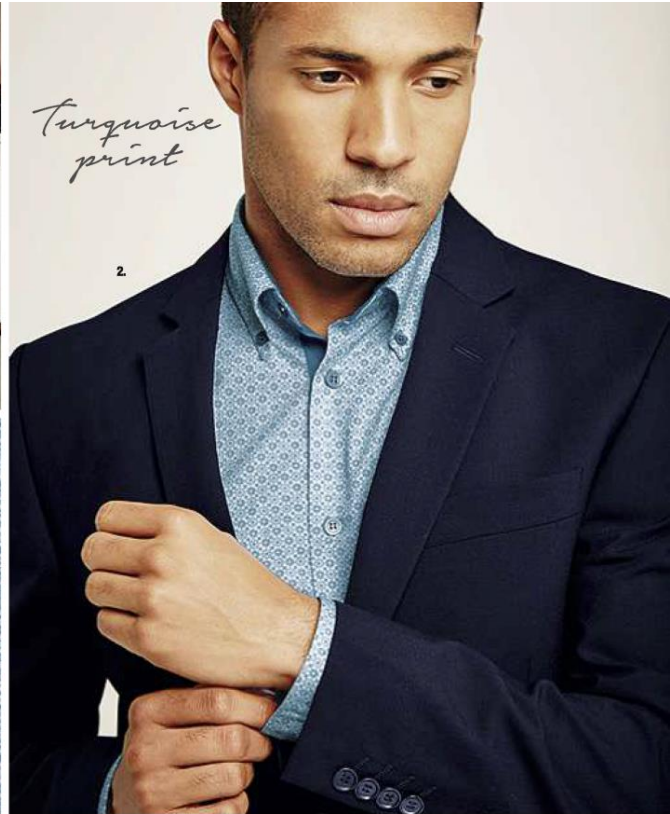
Black & White **FB4610**

2. MEN'S PATTERNED SHIRT

Choose a stylish patterned button down for a smart shirt with a difference. Features contrast Chambray trim inside collar, cuff and front placket for added style.

Length 80.5cm/31.5in. 65% Polyester, 35% Cotton. 30° wash. Sizes 14.5in-19in.

Black & White **MS1820**



MAKE A STATEMENT WITH PATTERNED SHIRTS THAT ARE EASY TO MIX AND MATCH WITH OUR COORDINATING CHAMBRAY SHIRTS & BLOUSES.

Match our Pink print with the Charcoal Chambray on page 70.

1. LADIES PATTERNED SHIRT

Give a smart and chic shirt some added flair with patterned prints and classic semi-fitted tailoring. Features contrast chambray trim inside collar, cuff and front placket.

Length 83cm/25in. 65% Polyester, 35% Cotton. 30° wash. Sizes 6-26.

Turquoise **FB4600** Pink **FB4620**

2. MEN'S PATTERNED SHIRT

Choose a stylish patterned button down for a smart shirt with a difference. Features contrast chambray trim inside collar, cuff and front placket for added style.

Length 80.5cm/31.5in. 65% Polyester, 35% Cotton. 30° wash. Sizes 14.5in-19in.

Turquoise **MS1810** Pink **MS1850**



Unique personality with a dash of classic



THE DIRECTORY

CHOOSE THE COLOUR AND STYLE THAT SUITS YOUR TEAM.

BLACK



1. Wrap front blouse
FB4740



2. Slash neck blouse
FB4630



3. Open collar blouse
FB4690

CREAM



1. Wrap front blouse
FB4760



2. Slash neck blouse
FB4650



3. Open collar blouse
FB4710

COBALT



1. Wrap front blouse
FB4790



2. Slash neck blouse
FB4680



3. Open collar blouse
FB3600

1. NEW WRAP FRONT BLOUSE

Wrapover front, short sleeves, tumbuck straight lapel.

Length 67cm/26.4in. 100% Polyester.
Crêpe de Chine. Easy care. Minimum iron. 40° wash.
Sizes 6-26.

2. NEW SLASH NECK BLOUSE

Slash neckline, grow-in kimono style sleeve.

Length 61cm/24in. 100% Polyester.
Crêpe de Chine. Easy care. Minimum iron. 40° wash.
Sizes 6-26.

3. NEW OPEN COLLAR BLOUSE

Semi-fitted styling, angled bust darts.

Length 62cm/24.5in. 100% Polyester.
Crêpe de Chine. Easy care. Minimum iron. 40° wash.
Sizes 6-26.

PLUM



1. Wrap front blouse
FB4770



2. Slash neck blouse
FB4660



3. Open collar blouse
FB3590

GREY



1. Wrap front blouse
FB4750



2. Slash neck blouse
FB4640



3. Open collar blouse
FB4700

TEAL



1. Wrap front blouse
FB4780



2. Slash neck blouse
FB4670



3. Open collar blouse
FB3610



WORN BY
Team GB

BRINGING YOU PIECES WORN BY ATHLETES OF ALL SHAPES AND SIZES AT THE RIO OLYMPIC GAMES, THIS ELEGANT, STRETCH FABRIC TOP IS BASED ON THE WRAP TOP WORN BY TEAM GB.



1. NEW JERSEY WRAP TOP

Short sleeves, front wrap gathered into opposite side seam, comfortable, flattering shape.

Length 60cm/23.6in. 92% Viscose 8% Elastane. Easy care. 30° wash. Sizes 6-26.

White **FB4810**
Black **FB4800**

2. NEW LADIES SLIM LEG TROUSER

Drop waist styling, slim leg, front zip fastening, half lined, side pockets, belt loops, permanent trouser crease and Responsive Waistband.

66% Polyester, 33% Viscose, 1% Lycra with stain resistant Teflon®. 100% Polyester Lining. 40° wash. Sizes 6-26.

Blue **FT3250**
Length 73.5cm/29in.
Unhemmed inside leg 88cm/35in. **FT3260**

Plum **FT3290**
Length 73.5cm/29in.
Unhemmed inside leg 88cm/35in. **FT3300**



Dina Asher Smith
Bronze medalist,
Rio Olympic Games 2016



THE POWER OF *three*

THREE STUNNING BLOUSES IN SEVEN SIGNATURE COLOURWAYS,
ALL EXCLUSIVE TO SIMON JERSEY.

Our range of exclusive patterns

-  *Black & white squares*
page 87
-  *Navy shards*
page 88
-  *Grey shards*
page 89
-  *Blue circles*
page 90
-  *Hot pink circles*
page 91
-  *Blue watercolour*
page 92
-  *Plum & teal ovals*
page 93



Pleat front blouse

THE PLEATED SCOOP NECKLINE, WITH BOUND EDGES, CREATES A FLATTERING LOOK AND A BEAUTIFULLY CLASSIC FINISH THAT'S LOW ENOUGH TO KEEP COOL, BUT HIGH ENOUGH TO PRESERVE MODESTY.

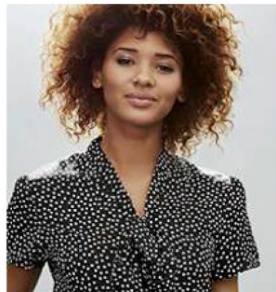
ELASTICATED HEM SLEEVES AND WAISTLINE CREATES A COMFORTABLE, ATTRACTIVE SHAPE, FOR ALL BODY TYPES.



Semi-fitted open collar blouse

THE SEMI-FITTED STYLING, WITH ADDED BUST DARTS, HELPS TO CREATE A FLATTERING SHAPE AND A COMFORTABLE FIT, WITH BUILT-IN SIDE VENTS FOR EASE OF MOVEMENT AND CREASE PREVENTION.

DESIGNED TO FLATTER FIGURES OF ALL SHAPES AND SIZES BY OFFERING FUNCTIONALITY WITHOUT SACRIFICING STYLE.



Tie neck blouse

THE MODERN NECKLINE, WITH FEATURE BOW, IS FINISHED OFF WITH PUFF SHOULDERS AND CAP SLEEVES TO GIVE AN ELEGANT, CATWALK EFFECT.

SEMI-FITTED STYLING AND ADDED BUST DARTS HELP TO CREATE A COMFORTABLE, FLATTERING SHAPE OVER THE BODY, GIVING EASE OF MOVEMENT AND A TAILORED FINISH.

1. SEMI-FITTED OPEN COLLAR BLOUSE
100% Polyester, Cool Crêpe.
Easy care. Minimum iron.
30° wash. Sizes 6-26.

Black and white square **FB3400**

2. SHIFT DRESS
100% Polyester, Cool Crêpe.
Easy care. Minimum iron.
30° wash. Sizes 6-16.

Black and white square **FD2670**

3. PLEAT FRONT BLOUSE
100% Polyester, Cool Crêpe.
Easy care. Minimum iron.
30° wash. Sizes 8-26.

Black and white square **FB3390**

4. TIE NECK BLOUSE
100% Polyester, Cool Crêpe.
Easy care. Minimum iron.
30° wash. Sizes 6-26.

Black and white square **FB3360**

2.
For our jacket,
see page 57.





1. PLEAT FRONT BLOUSE
 100% Polyester. Cool crêpe.
 Easy care. Minimum iron.
 30° wash. Length 62cm/24.5in.
 Sizes 6-26.

Navy shards **FB4630**
 Grey shards **FB4190**

2. TIE NECK BLOUSE
 100% Polyester. Cool crêpe.
 Easy care. Minimum iron.
 30° wash. Length 63cm/25in.
 Sizes 6-26.

Navy shards **FB4610**
 Grey shards **FB4140**

3. SEMI-FITTED OPEN COLLAR BLOUSE
 100% Polyester. Cool crêpe.
 Easy care. Minimum iron.
 30° wash. Length 62cm/24.5in.
 Sizes 6-26.

Navy shards **FB4520**
 Grey shards **FB4160**

4. SHIFT DRESS
 100% Polyester. Cool crêpe.
 Easy care. Minimum iron.
 30° wash.
 Size 6-18.

Navy shards **FD2850**
 Grey shards **FD2850**





1.



3.

1. TIE NECK BLOUSE
100% Polyester. Cool crêpe.
Easy care. Minimum iron.
30° wash. Sizes 6-26.

Blue circles **FB3410**
Hot pink circles **FB3450**

2. SEMI-FITTED OPEN COLLAR BLOUSE
100% Polyester. Cool crêpe.
Easy care. Minimum iron.
30° wash. Sizes 6-26.

Blue circles **FB3430**
Hot pink circles **FB3460**

3. PLEAT FRONT BLOUSE
100% Polyester. Cool crêpe.
Easy care. Minimum iron.
30° wash. Sizes 8-26.

Blue circles **FB3420**
Hot pink circles **FB3440**



2.

Blue circles

For trousers
see page 52.



3.

Hot pink circles



2.



1.

1. SEMI-FITTED OPEN COLLAR BLOUSE
100% Polyester. Cool crêpe. Easy care. Minimum iron. 30° wash. Sizes 6-26.
Blue watercolour **FB3710**

2. TIE NECK BLOUSE
100% Polyester. Cool crêpe. Easy care. Minimum iron. 30° wash. Sizes 6-26.
Blue watercolour **FB3700**
Plum ovals **FB3350**

3. PLEAT FRONT BLOUSE
100% Polyester. Cool crêpe. Easy care. Minimum iron. 30° wash. Sizes 8-26.
Blue watercolour **FB3690**
Plum ovals **FB3340**

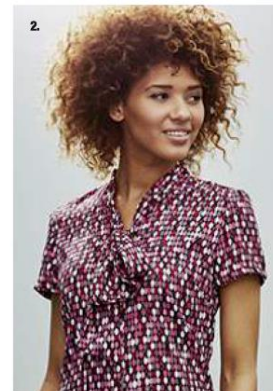
4. SHIFT DRESS
100% Polyester. Cool crêpe. Easy care. Minimum iron. 30° wash. Sizes 6-18.
Blue watercolour **FD2660**

1.

3.
Plum ovals

Blue watercolour

Ovals
EXCLUSIVE TO SIMON JERSEY



STYLES

with added
stretch

Our all black shirts and blouses feature cotton rich fabrics with figure flattering stretch.



1.

1. MODERN FIT LONG SLEEVE BLOUSE WITH STRETCH

Princess seams at front with bust darts, concealed front button fastening, darts at back body.

60% Cotton, 35% Polyester,
5% Spandex®, 30° wash.
Sizes 6-30.

Black **FB1960**

Also available in white,
see pages 100-101.



2.

2. MODERN FIT LONG SLEEVE SHIRT WITH STRETCH

Semi-cutaway collar, fitted body shape with back darts.

60% Cotton, 35% Polyester,
5% Spandex®, 30° wash.
Sizes XS-XXL.

Black **US0950**



3.

3. MODERN FIT SHORT SLEEVE BLOUSE WITH STRETCH

Princess seams at front with bust darts, concealed front button fastening, darts at back body.

60% Cotton, 35% Polyester,
5% Spandex®, 30° wash.
Sizes 6-30.

Black **FB2620**



1.

Classic Black



2.



3.



4.



5.



6.



7.



8. NEW

1. MANDARIN PUFF SLEEVE BLOUSE

Open collar, semi-fitted blouse, capped puff sleeve with button detail, gathers into front yoke, princess panel shaping, side slits.

65% Polyester, 35% Cotton. Easy care. 30° wash. Sizes 8-26.

Black **FB2180**

2. LONG SLEEVE SEMI-CUTAWAY COLLAR SHIRT

Chest patch pocket, two button adjustable cuff.

65% Polyester, 35% Cotton. Easy care. 30° wash. Sizes 14in-19.5in.

Black **MS0580**

3. LONG SLEEVE OPEN COLLAR BLOUSE

Semi-fitted, button cuff fastening.

65% Polyester, 35% Cotton. Easy care. 30° wash. Sizes 6-26.

Black **FB1130**

4. SHORT SLEEVE OPEN COLLAR BLOUSE

Semi-fitted.

65% Polyester, 35% Cotton. Easy care. 30° wash. Sizes 6-26.

Black **FB1120**

5. SHORT SLEEVE SHIRT

Semi-cutaway collar, chest patch pocket.

65% Polyester, 35% Cotton. Easy care. 30° wash. Sizes XS-3XL.

Black **US0460**

6. LONG SLEEVE CONCEALED FASTENING BLOUSE

Semi-fitted, concealed front, button fastening to top of collar, button cuff fastening. Bust darts.

65% Polyester, 35% Cotton. Easy care. 30° wash. Sizes 6-26.

Black **FB2640**

7. 3/4 SLEEVE BLOUSE

Semi-fitted. Inset detail on sleeve, open collar.

65% Polyester, 35% Cotton. Easy care. 30° wash. Sizes 6-26.

Black **FB2890**

8. NEW JERSEY WRAP TOP

Short sleeves, front wrap gathered into opposite side seam, comfortable, flattering shape.

Length 60cm/23.6in. 92% Viscose, 8% Elastane. 40° wash. Sizes 6-26.

Black **FB4800**



STRETCH *cotton*

Our modern fit white shirts and blouses all feature cotton rich fabrics with added stretch.

1. MODERN FIT LONG SLEEVE SHIRT WITH STRETCH

Giving a stylish cut with a practical edge, this shirt features a fashion forward semi-cutaway collar and fitted body with back darts. Try a rolled sleeve for a contemporary casual feel.

60% Cotton, 35% Polyester, 5% Spandex®.
30° wash. Sizes XS-XXL.

White **US0960**

2. MODERN FIT SHORT SLEEVE BLOUSE WITH STRETCH

Princess seams at front with bust darts, concealed front button fastening, darts at back body.

60% Cotton, 35% Polyester, 5% Spandex®.
30° wash. Sizes 6-30.

White **FB2610**

3. MODERN FIT LONG SLEEVE BLOUSE WITH STRETCH

Princess seams at front with bust darts, concealed front button fastening, darts at back body.

60% Cotton, 35% Polyester, 5% Spandex®.
30° wash. Sizes 6-30.

White **FB0781**

Also available in black,
see pages 96-97.



1. LONG SLEEVE OPEN COLLAR BLOUSE

Semi-fitted, button cuff fastening, bust darts.

65% Polyester, 35% Cotton.
Easy care, 30° wash.
Sizes 6-28.

White

FB0960

2. SHORT SLEEVE OPEN COLLAR BLOUSE

Semi-fitted, front button fastening, bust darts.

65% Polyester, 35% Cotton.
Easy care, 30° wash.
Sizes 6-28.

White

FB0960

3. MANDARIN PUFF SLEEVE BLOUSE

Open collar, semi-fitted blouse, capped puff sleeve with button detail, gathers into front yoke, princess panel shaping, side slits.

65% Polyester, 35% Cotton.
Easy care, 30° wash.
Sizes 6-26.

White

FB2480

4. SHORT SLEEVE CONCEALED FASTENING BLOUSE

Concealed front button fastening to top of collar, bust darts.

65% Polyester, 35% Cotton.
Easy care, 30° wash.
Sizes 6-26.

White

FB0010



Crisp White

5. LONG SLEEVE CONCEALED FASTENING BLOUSE

Concealed front button fastening to top of collar, button cuff fastening, bust darts.

65% Polyester, 35% Cotton.
Easy care, 30° wash.
Sizes 6-26.

White

FB0960

6. JERSEY UNDERSUIT TOP

Round neck, short sleeve, comfortable flattering shape.

92% Viscose, 8% Elastane. Easy care. Minimum iron. 30° wash.
Sizes 8-26.

White

FB3280

7. NEW JERSEY WRAP TOP

Short sleeves, front wrap gathered into opposite side seam, comfortable, flattering shape.

Length 60cm/23.6in. 92% Viscose, 8% Elastane. Easy care. 30° wash.
Sizes 6-26.

White

FB4810





CLASSIC
STYLING
in *white*

Rely on a precision finish with white shirts in styles you know and love. All featuring easy care polycotton fabrics.



1. SHORT SLEEVE CLASSIC COLLAR SHIRT

Chest patch pocket.

65% Polyester, 35% Cotton. Easy care. 30° wash. Sizes 14in-19in.

White **MS0400**

2. LONG SLEEVE CLASSIC COLLAR SHIRT

Chest patch pocket, two button adjustable cuff.

65% Polyester, 35% Cotton. Easy care. 30° wash. Sizes 14in-19in.

White **MS0380**

3. LONG SLEEVE SEMI-CUTAWAY COLLAR SHIRT

Chest patch pocket, two button adjustable cuff.

65% Polyester, 35% Cotton. Easy care. 30° wash. Sizes 14in-19.5in.

White **MS0480**

4. SHORT SLEEVE SEMI-CUTAWAY COLLAR SHIRT

Chest patch pocket.

65% Polyester, 35% Cotton. Easy care. 30° wash. Sizes 14in-19in.

White **MS0650**

Pale Grey



1.
For skinny fit see page 245.



“ Let your team find the shirt cut that they love with our range of styles, and our matching colours will keep that coordinated feel. ”



HELEN HARKER, DESIGN MANAGER

1. MODERN FIT LONG SLEEVE SHIRT WITH STRETCH

Giving a stylish cut with a practical edge, this shirt features a fashion forward semi-cutaway collar and fitted body with back darts. Try a rolled sleeve for a contemporary casual feel.

60% Cotton, 36% Polyester, 5% Spandex®. 30° wash. Sizes XS-XXL.

Pale grey **US1020**

2. MODERN FIT LONG SLEEVE BLOUSE WITH STRETCH

Princess seams at front with bust darts, concealed front button fastening, darts at back body.

60% Cotton, 35% Polyester, 5% Spandex®. 30° wash. Sizes 8-30.

Pale grey **FB4820**

3. LONG SLEEVE OPEN COLLAR BLOUSE

Semi-fitted, bust darts, button cuff fastening.

65% Polyester, 35% Cotton. Easy care. 30° wash. Sizes 8-26.

Cornflower blue **FB1860**

4. SHORT SLEEVE OPEN COLLAR BLOUSE

Semi-fitted, bust darts.

65% Polyester, 35% Cotton. Easy care. 30° wash. Sizes 8-26.

Cornflower blue **FB1860**

Cornflower Blue



5. LONG SLEEVE SEMI-CUTAWAY COLLAR SHIRT

Chest patch pocket, two button adjustable cuff.

65% Polyester, 35% Cotton. Easy care. 30° wash. Sizes 14in-19.5in.

Cornflower blue **MS0360**

6. SHORT SLEEVE SHIRT

Chest patch pocket.

65% Polyester, 35% Cotton. Easy care. 30° wash. Sizes XS-XXL.

Cornflower blue **US0940**





1.
For the tie
see page 245.

1. SHORT SLEEVE SHIRT
Semi-cutaway collar, chest patch pocket.
65% Polyester, 35% Cotton.
Easy care, 30° wash.
Sizes XS-XXL.

Plum **US0820**
Teal **US0860**

2. LONG SLEEVE SEMI-CUTAWAY COLLAR SHIRT
Long sleeve, chest patch pocket.
65% Polyester, 35% Cotton.
Easy care, 30° wash.
Sizes 14.5in-19in.

Plum **MS1100**
Teal **MS1130**



3. SHORT SLEEVE OPEN COLLAR BLOUSE
Semi-fitted.

65% Polyester, 35% Cotton.
Easy care, 30° wash.
Sizes 8-26.

Plum **FB3170**
Teal **FB3160**

4. LONG SLEEVE OPEN COLLAR BLOUSE
Long sleeve, open collar, semi-fitted, princess seams at front, darts at back. Button cuff fastening.

65% Polyester, 35% Cotton.
Easy care, 30° wash.
Sizes 8-26.

Plum **FB2670**
Teal **FB2660**



Teal

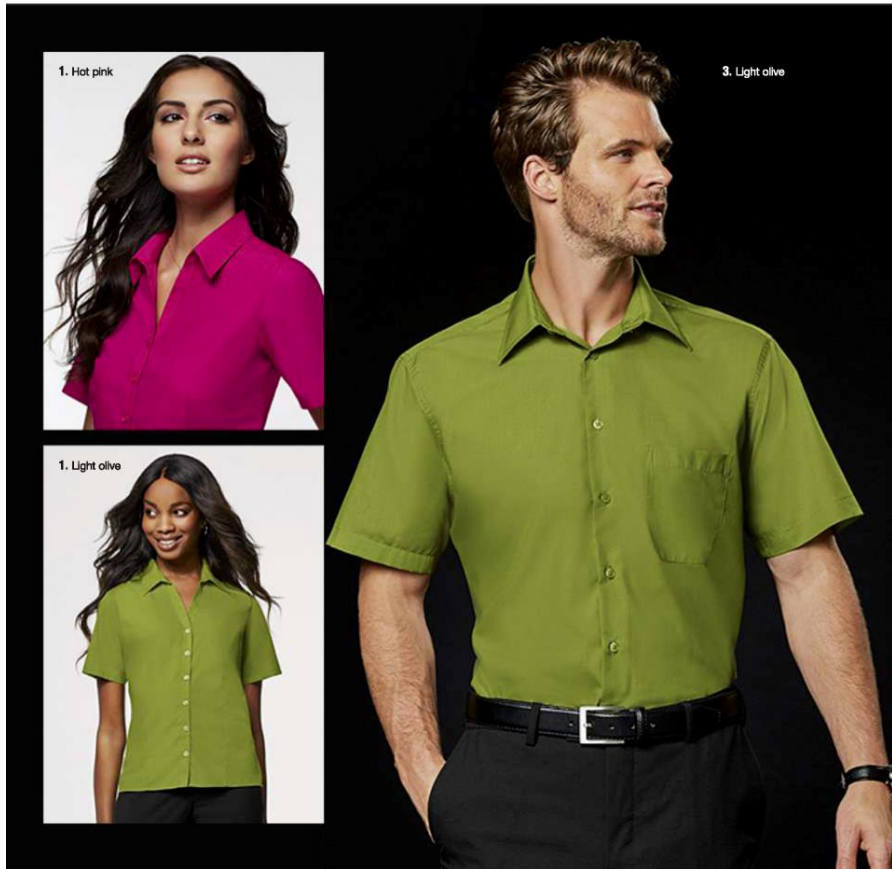


5. MANDARIN PUFF SLEEVE BLOUSE
Open collar, semi-fitted blouse, capped puff sleeve with button detail, gathers into front yoke, princess panel shaping, side slits.

65% Polyester, 35% Cotton. Easy care, 30° wash. Sizes 8-26.

Plum **FB2650**
Teal **FB2420**





1. SHORT SLEEVE OPEN COLLAR BLOUSE

Semi-fitted.
65% Polyester, 35% Cotton.
Easy care, 30° wash.
Sizes 8-26.

Hot pink **FB3200**
Light olive **FB3180**
Red **FB1400**

2. MANDARIN PUFF SLEEVE BLOUSE

Open collar, semi-fitted blouse, capped puff sleeve with button detail, gathers into front yoke, princess panel shaping, side slits.

65% Polyester, 35% Cotton.
Easy care, 30° wash.
Sizes 8-26.

Red **FB3100**

3. SHORT SLEEVE SHIRT

Semi-outlawy collar, chest patch pocket.

65% Polyester, 35% Cotton.
Easy care, 30° wash.
Sizes XS-XXL.

Light olive **US0870**
Red **US0510**





1. NEW MEN'S MANDARIN COLLAR SHIRT

Modern style, long sleeve, contrast mandarin collar.

Length 80.5cm/31.7in. 71% Cotton 29% Polyester.
40° wash. Sizes 14.5in-19in.

Blue **MS1880** Grey **MS1880**

2. NEW LADIES MANDARIN COLLAR SHIRT

Modern style, long sleeve, contrast mandarin collar.

Length 61.5cm/24.2in. 71% Cotton 29% Polyester.
40° wash. Sizes 8-26.

Blue **FB4720** Grey **FB4730**

2. Blue

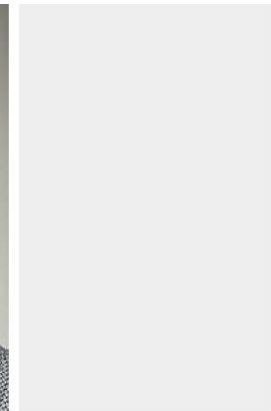
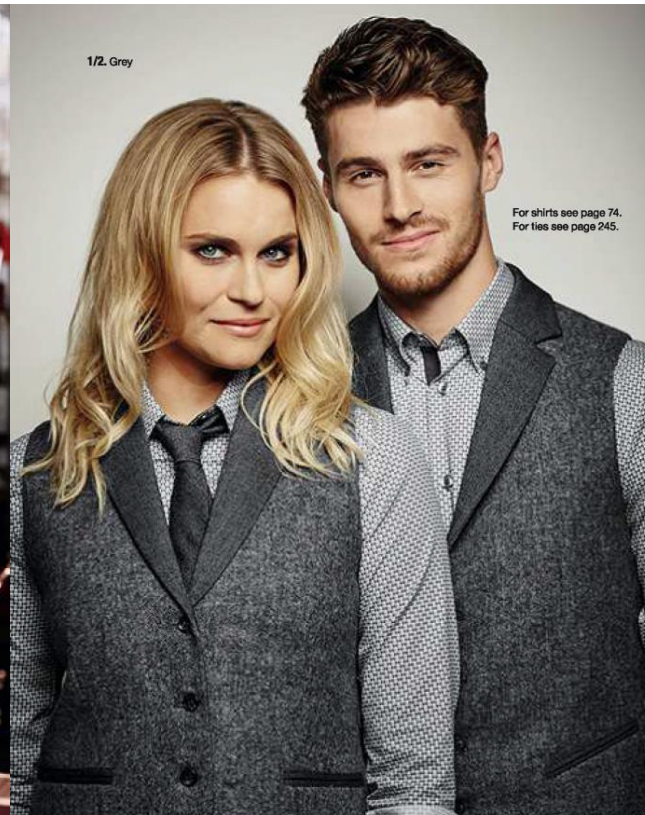


1. Grey



2. Grey





1. LADIES TWEED WAISTCOAT

Choose rich fabrics with functional design in this wool tweed waistcoat with contrast collar and revers, adjustable back belt for flattering fit and featuring two functional jetted pockets and inbreast pocket.

Length 53.5cm/21 in. Main 100% Wool. Collar 52% Wool, 46% Polyester, 2% Elastane. Lining & Back 100% Polyester. Dry clean only. Sizes 6-26.

Brown **FW0580** Grey **FW0570**

2. TWEED WAISTCOAT

In two stylish shades of 100% wool tweed, function meets fashion in this waistcoat with contrast collar and revers, adjustable back belt and featuring two functional jetted pockets and inbreast pocket.

Main 100% Wool. Collar 52% Wool, 46% Polyester, 2% Elastane. Lining & Back 100% Polyester. Dry clean only. Sizes 34-52.

Brown **MW0610** Grey **MW0600**



*Personality
with a dash
of classic
styling*



G&C
Uniformes



*Tailored elegance,
ready for every occasion.*



4. Charcoal



4. Dark navy



4 & 5. Black



5. Mulberry



6. Morning stripe



7. Brown tweed



7. Grey tweed



8. Black/silver diamond

1. DENIM WAISTCOAT

Combine the modern feel of pale grey denim with a classic cut of waistcoat, part lined and with two black jettied pockets and adjustable back belt for added functionality.

Ladies: Length 54.5cm/21.5in.
Men's: Length 59cm/23in.
65% Cotton, 33% Polyester,
2% Elastane. 40° wash.

Ladies: Sizes 8-20.
Pale grey

FW0600

Men's: Sizes 34-52.
Pale grey

MW0620

2. SILVER SERVICE WHITE GLOVES

100% Cotton.
One size.

Unisex

MA0030



3. BOW TIE

100% Polyester satin.

TI0350

4. QUALITAS WAISTCOAT

Fabric back and front, functional jettied pockets, adjustable back (men's only).

Qualitas. 54% Polyester, 44% Wool,
2% Lycra®. Teflon® coated. 40° wash.

Men's: Sizes 34-54.
Charcoal
Dark navy
Black

MW0490
MW0480
MW0400

Ladies: Sizes 8-26.
Charcoal
Dark navy
Black

FW0460
FW0390
FW0410

5. ESSENTIALS WAISTCOAT

Fabric back and front, functional welt pockets.

100% Polyester. 30° wash.

Men's: Sizes 34-52.
Black
Mulberry

MW0290
MW0300

Ladies: Sizes 8-26.
Black
Mulberry

FW0050
FW0070

6. PRESTIGE WAISTCOAT

Fabric back and front, functional jettied pockets, adjustable back (men's only), fully lined.

55% Polyester, 45% Wool. 40° wash.

Men's: Sizes 34-52.
Morning stripe

MW0080

Ladies: Sizes 8-26.
Morning stripe

FW0090

7. TWEED WAISTCOAT

100% Wool front. 52% Wool,
46% Polyester, 2% Elastane Collar.
100% Polyester Lining & Back.
Dry clean only.

Men's: Length 59cm/23in.
Sizes 34-52.
Brown
Grey

MW0610
MW0600

Ladies: Length 53.5cm/21in.
Sizes 8-26.
Brown
Grey

FW0580
FW0570

8. PRESTIGE WAISTCOAT

Fabric front, black satin back, functional jettied pockets, adjustable back (men's only), brushed metal buttons.

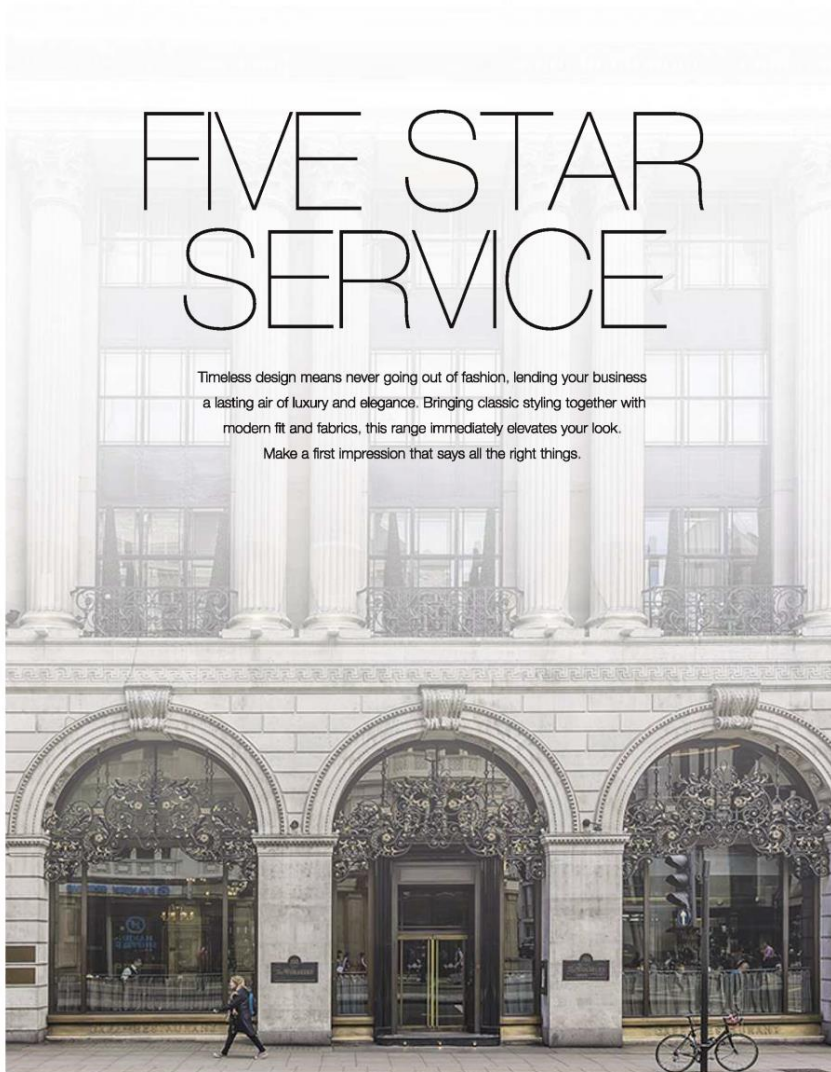
Jacquard 96% Polyester, 4% Lurex.
Dry clean only.

Men's: Sizes 34-52.
Black/silver diamond

MW0510

Ladies: Sizes 8-26.
Black/silver diamond

FW0480



FIVE STAR SERVICE

Timeless design means never going out of fashion, lending your business a lasting air of luxury and elegance. Bringing classic styling together with modern fit and fabrics, this range immediately elevates your look. Make a first impression that says all the right things.

CREATE AN ELEGANT MOOD YOUR CUSTOMERS WILL TRUST WITH UNIFORMS THAT ELEVATE YOUR BUSINESS IN AN INSTANT.



1. CONCIERGE TAILCOAT

A chic and classic single-breasted design with double-breasted lapels and centre back vent. Four button cuff and covered button details add a five star feel.

100% Wool. Dry clean only. Sizes 34-50.

Black **MJ0910**



2. CONCIERGE OVERCOAT

Timeless design in luxury fabrics, this single-breasted coat with three button cuff has a stylish satin lining. Two practical interior pockets and flap slide pockets are included, with a centre back vent.

60% Wool, 20% Cashmere, 20% Polyamide. Dry clean only. Sizes 36-64.

Black **MJ0900**



1. LADIES DENIM CHEF JACKET

Make a statement in chef's uniforms with a modern edge. In grey and black denim, the semi-fitted design stays comfy with underarm vents, popper fastening and three section spoon/pen pocket on sleeve.

Length 76cm/30in, 65% Cotton, 33% Polyester, 2% Elastane (220g/m²), 40° wash. Sizes 8-20.

Pale grey **FJ1580**

2. MEN'S DENIM CHEF JACKET

Far from the classic chef's whites, this jacket combines a fresh fabric and contrast collar with functionality including on sleeve spoon/pen pocket, popper fastening and built-in underarm ventilation.

Length 74cm/29in, 65% Cotton, 33% Polyester, 2% Elastane (220g/m²), 40° wash. Sizes 32-52.

Pale grey **CJ0680**





DENIM on *trend*

GET MODERN
FASHION EDGE AND
HARDWORKING COMFORT
WITH DENIM APRONS.

1. NEW DENIM SQUARE MONEY PURSE
Sleek squared hem, contrast pocket, waist ties with a tan reverse side and tan coloured top stitching.

Length 38cm/15in, width 78cm/30.5in.
65% Cotton, 33% Polyester, 2% Elastane
(220g/m²), 40° wash.
One size.

Pale and dark blue MP2990

2. NEW DENIM SHORT APRON WITH POCKETS
Colour block apron, two large front pockets, coordinated waist tie with a tan reverse side and tan coloured top stitching.

Length 58cm/23in, width 68cm/27in.
65% Cotton, 33% Polyester, 2% Elastane
(220g/m²), 40° wash.
One size.

Pale and dark blue MP2990

3. NEW DENIM BIB APRON
Bib style apron, contrast colour blocks, tan trims between contrast edges on pockets and along top, button strap and coordinating ties, tan coloured top stitching.

Length 76.5cm/30in, width 67cm/26.5in.
65% Cotton, 33% Polyester, 2% Elastane
(220g/m²), 40° wash.
One size.

Pale and dark blue MP2970





DENIM made *modern*

LET BLACK AND GREY DENIM APRONS GIVE EDGE AND STYLE TO YOUR UNIFORM.

1. DENIM SHORT APRON WITH POCKETS

Combining modern fabrics and functionality, this colour block apron features two large front pockets and coordinated ties, in a stretch cotton/poly blend for durability and comfort.

Length 58cm/23in, width 68cm/27in. 65% Cotton, 33% Polyester, 2% Elastane (220g/m²), 40° wash. One size.

Pale and dark grey **MP3930**



2. DENIM BIB APRON

In a cool modern shade, contrast colour blocks on two front pockets and hemline add accent. Button strap and coordinating ties.

Length 78.5cm/30in, width 67cm/26.5in. 65% Cotton, 33% Polyester, 2% Elastane (220g/m²), 40° wash. One size.

Pale and dark grey **MP3920**



3. DENIM SQUARE MONEY PURSE

Sleek squared hem, contrast pocket and ties for a clean, modern look.

Length 38cm/15in, width 78cm/30.5in. 65% Cotton, 33% Polyester, 2% Elastane (220g/m²), 40° wash. One size.

Pale and dark grey **MP3950**



4. DENIM ROUNDED MONEY PURSE

Modern denim fabric with a rounded hem, contrast front pocket and ties.

Length 38cm/15in, width 78cm/30.5in. 65% Cotton, 33% Polyester, 2% Elastane (220g/m²), 40° wash. One size.

Pale and dark grey **MP3940**





1. PRESTIGE WOVEN SHORT APRON
Black webbing ties.

Length 46cm/18in, width 92cm/36in.
65% Polyester, 35% Cotton (210g/m²).
60° wash.
One size.

Black denim stripe **MP1400**

2. PRESTIGE WOVEN BIB APRON
Large patch pocket. Black webbing ties.

Length 99cm/39in, width 101cm/39.5in.
65% Polyester, 35% Cotton (210g/m²).
60° wash.
One size.

Black denim stripe **MP1500**



3. PRESTIGE SHORT APRON
Beige webbing ties.

Length 46cm/18in, width 92cm/36in.
100% Cotton (275g/m²).
60° wash. Reversible.
One size.

Beige stripe **MP1240**

4. PRESTIGE BIB APRON
Beige webbing ties. Large patch pocket.

Length 98cm/39in, width 101cm/39.5in.
100% Cotton (275g/m²). 60° wash.
One size.

Beige stripe **MP1230**

5. PRESTIGE WOVEN BIB APRON
Large patch pocket, tea towel loop.
Adjustable neck strap for comfort.
Black webbing ties.

Length 99cm/39in, width 101cm/39.5in.
100% Cotton (210g/m²). 60° wash.
One size.

Black with teal stripe detail **MP1890**

6. PRESTIGE WOVEN SHORT APRON
Black webbing ties.

Length 46cm/18in, width 92cm/36in.
100% Cotton (210g/m²). 60° wash.
One size.

Black with teal stripe detail **MP1870**



Black denim stripe detail



Beige stripe detail



Black with teal stripe detail





1. PRESTIGE WOVEN BIB APRON

Large patch pocket. Black webbing ties.
Length 96cm/39in, width 101cm/39.5in.
100% Cotton (210g/m²). 60° wash.
One size.

Black with red stripe **MP0980**
Black with light
olive/raspberry stripe **MP2080**



Black with red stripe detail

2. PRESTIGE WOVEN SHORT APRON

Black webbing ties.
Length 46cm/18in, width 92cm/36in.
100% Cotton (210g/m²). 60° wash.
One size.

Black with red stripe **MP0970**
Black with light
olive/raspberry stripe **MP2070**



Black with light olive/raspberry stripe detail

3. PRESTIGE WOVEN V-NECK APRON

Adjustable neck strap, two front pockets.
Black webbing ties.
Length 45cm/17.5in, width 70cm/27.5in.
100% Cotton (210g/m²). 60° wash.
One size.

Black with red stripe **MP2000**

styling tip

Complete your team's look with stylish coordination. See our matching shirts and blouses on pages 110-111.





1. CLASSIC TABARD

Patch pocket, side tabs, adjustable stud fastening.
Length 76cm/30in, width 52cm/20.5in.
65% Cotton, 35% Polyester. 60° wash.
One size.

Mulberry	FP0030
Navy	FP0040
Royal	FP0260
Black	FP0150

2. SHORT APRON

Self-fabric ties.
Length 41.5cm/16.5in, width 41.5cm/16.5in. 65% Polyester, 35% Cotton. 60° wash.
One size.

White with black trim **FP0180**

3. POPPER STRAP PRINT APRON

Adjustable neck strap, large patch pocket, coordinating webbing ties.
Length 88cm/35in, width 92cm/36in.
100% Cotton. 60° wash. One size.

Grey and black check **MP1470**

4. SHORT PRINT APRON

Coordinating webbing ties.

One size.

Grey and black check **MP1480**

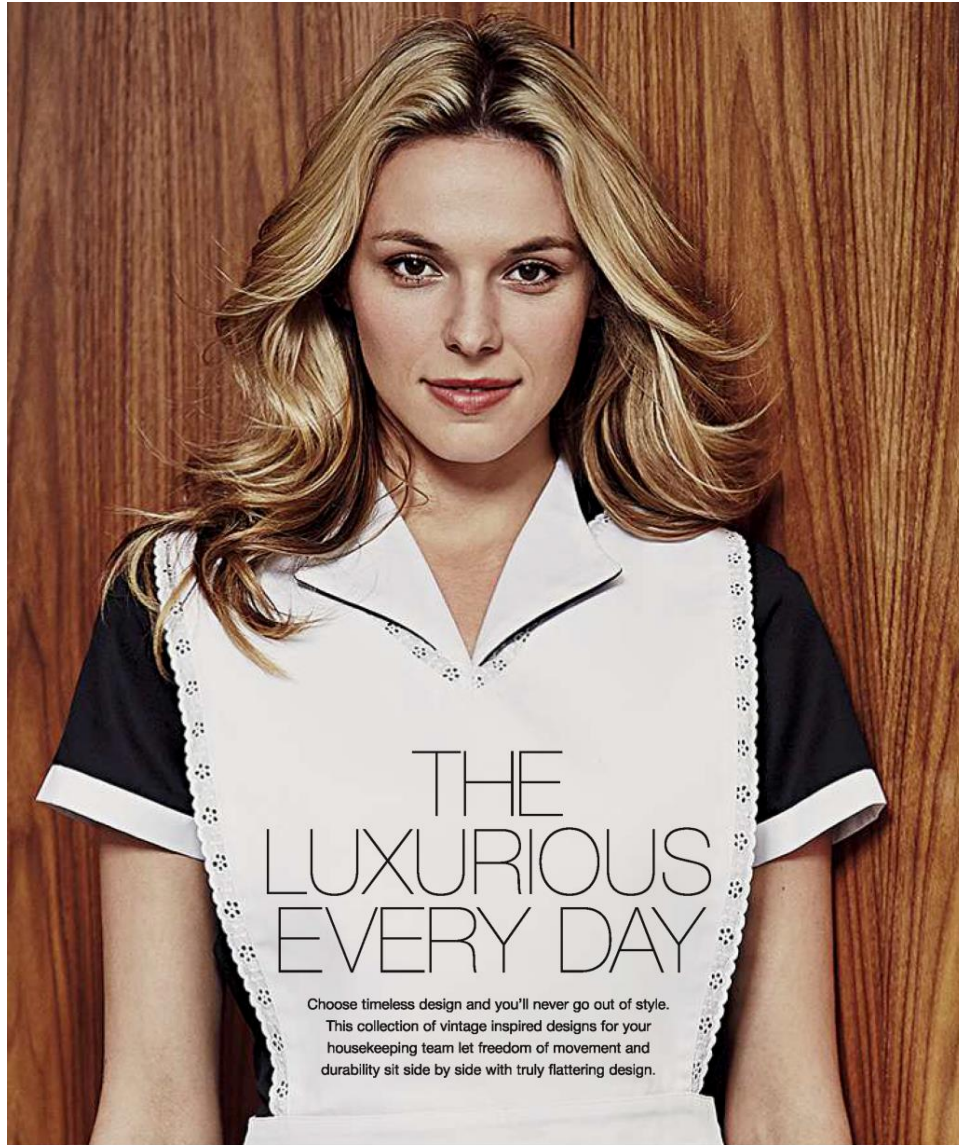
5. APRON

Graphic woven check. Two pockets, black webbing ties.

Length 32cm/12.5in, width 71cm/28in.
55% Cotton, 45% Polyester. 40° wash.
One size.

Black/white check **FP0350**





THE LUXURIOUS EVERY DAY

Choose timeless design and you'll never go out of style. This collection of vintage inspired designs for your housekeeping team let freedom of movement and durability sit side by side with truly flattering design.



1.
2.
3.
4.



5.
6.



- 1. LONG SLEEVE CONCEALED FASTENING BLOUSE**
Simple and classic with concealed front button fastening to top of collar, button cuff fastening, bust darts. 65% Polyester, 35% Cotton. 30° wash. Sizes 6-26. White **FB0960**
- 2. BLACK BOW TIE**
100% Polyester satin. One size. Black **TI0350**
- 3. BRODERIE ANGLAISE WAIST APRON**
100% Cotton with Broderie Anglaise trim for a vintage feel. Coordinated ties. Length 27.5cm/11in, width 38cm/15in. 60° wash. One size. White **FP0020**
- 4. SKIRT**
A fully lined black skirt with fluttering drop waist, slight stretch and centre back zip and pleat details. 54% Polyester, 44% Wool, 2% Lycra® with stain resistant Teflon®. 40° wash.
Sizes 6-26. Black Length 59cm/23in **FS0760**
Sizes 6-26. Black Length 64cm/25in **FS1090**
- 5. BRODERIE ANGLAISE FULL LACE APRON**
Vintage inspired Broderie Anglaise trim. V-shaped hem and neckline with coordinated ties. Length 88cm/34.5in, width 42.5cm/16.5in. 65% Polyester, 35% Cotton. 60° wash. One size. White **FP0120**
- 6. DEFINITIVE DRESS**
Chic and timeless, a single-breasted dress with princess panel and capped sleeves in monochrome. Concealed front zip, action back and self ties at back for added comfort. Length 106cm/43in. 65% Polyester, 35% Cotton (195g/m²). 60° wash. Sizes 8-26. Black/white **FD0740**





Action back and back tie feature (items 4 & 5)

1. PRESTIGE LADIES MANDARIN BUTTON TUNIC

Semi-fitted, capped sleeves, princess panels front and back, three mock buttons on each side, front inset pockets, centre back zip fastening. Length 88.5cm/27in. 50% Cotton, 50% Polyester (215g/m²). 40° wash. Size 6-26. Black **FD1060**

2. PRESTIGE LADIES PARALLEL LEG TROUSER

Drop waist styling, flat front, front zip fastening, Unhemmed inside leg 89cm/35in. 50% Cotton, 50% Polyester (215g/m²). 40° wash. Sizes 6-26. Black **FT1650**

3. DEFINITIVE DRESS WITH APRON

Short puff sleeve, front button fastening, front split. Self fabric adjustable belt, action back. Detachable white collar and detachable apron included (can be worn with or without apron). Dress length 114cm/45in. 65% Polyester, 35% Cotton (195g/m²). 60° wash. Size 6-26. Black **FD0410**

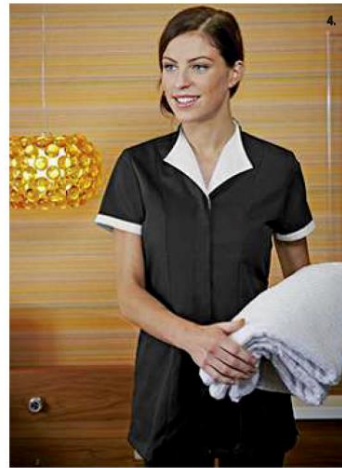
4. DEFINITIVE LADIES TUNIC

Single-breasted, semi-tied, concealed front zip fastening, princess panel styling, capped sleeves, side pockets, action back, self-ties at centre back. Length 73.5cm/29in. 65% Polyester, 35% Cotton (195g/m²). 60° wash. Black/White **FM0560**

5. DEFINITIVE DRESS

Single-breasted, semi-tied, concealed front zip fastening, princess panel styling, capped sleeves, action back, self ties at centre back. Length 109cm/43in. 65% Polyester, 35% Cotton (195g/m²). 60° wash. Size 6-26. Black/White **FD0740**

Item 2 Free Iron-on hem tape pack with all unhemmed trousers – a great solution that allows you to easily hem trousers to required length.



SLIM FIT STYLE

CLEVERLY DESIGNED BECAUSE AT SIMON JERSEY WE
KNOW YOU WANT HIGH STREET STYLE BUT WE NEVER
FORGET HOW HARD YOU WORK.



1. LADIES SLIM LEG TWILL TROUSER

Practicality with a fashion fit, these front zip fastening trousers feature a slight stretch, three side pockets and two back pockets.

Length 79cm/31in. 60% Cotton, 20% Polyester, 20% Elastomultiester (280g/m²), 60° wash. Sizes 8-16.

Navy **FT3190**
Black **FT2060**

2. MODERN FIT LONG SLEEVE BLOUSE WITH STRETCH

A blouse that works as hard as you do. Princess seams and bust darts improve fit, with stylish concealed front button fastening and back body darts.

60% Cotton, 35% Polyester, 5% Spandex®, 30° wash. Sizes 8-26.

White **FB0781**

3. MEN'S SLIM LEG TWILL TROUSER

Fit and stretch combined for comfort, with a tailored flat front. Three side pockets, two back pockets and front zip fastening.

Length 79cm/31in. 60% Cotton, 20% Polyester, 20% Elastomultiester (280g/m²), 60° wash. Sizes 30-36.

Navy **MT1330**
Black **MT0910**

4. MODERN FIT LONG SLEEVE SHIRT WITH STRETCH

Giving a stylish cut with a practical edge, this shirt features a fashion forward semi-cutaway collar and fitted body with back darts. Try a rolled sleeve for a contemporary casual feel.

60% Cotton, 35% Polyester, 5% Spandex®, 30° wash. Sizes XS-XXL.

White **US0980**



1. UNISEX CARGO TROUSER

Flat front, side pockets, back patch pocket with flaps, thigh pockets with flaps and pleat.

Unhemmed inside leg 94cm/37in.
100% Cotton (210g/m²), 40° wash.
Sizes XS-XXL.

Black **UT0100**
Navy **UT0090**



Black



Navy

2. UNISEX CARGO TROUSER

Elasticated waist with drawcord, side pockets. Lower thigh pockets with button flaps.

Unhemmed inside leg 89cm/35in.
65% Polyester, 35% Cotton (195g/m²).
60° wash.
Sizes S-XXL.

Black **CT0250**

3. UNISEX TROUSER

Elasticated waist with drawcord, side pockets, back patch pocket.

Unhemmed inside leg 89cm/35in.
65% Polyester, 35% Cotton (195g/m²).
60° wash.
Sizes XS-XXL.

Black **UT0120**
Navy **UT0080**



Black



Navy

4. WORKWEAR TROUSER

Side pockets, stitched front crease, side elastic.

Unhemmed inside leg 86cm/34in. 65% Polyester,
35% Cotton (195g/m²). 60° wash.
Sizes XS-XXL.

Black **PP0740**

5. MEN'S ONE FRONT PLEAT TROUSER

Side pockets, back pocket.

Unhemmed inside leg 94cm/37in. 65% Polyester,
35% Cotton (195g/m²). 60° wash.
Sizes 28-50.

Black **MT0030**

6. MEN'S FLAT FRONT TROUSER

Sewn-in front creases, two hip pockets, one back pocket, flat front and belt loops, part back elasticated waist, front button fastening.

Unhemmed inside leg 89cm/35in.
67% Polyester, 33% Cotton (195g/m²).
60° wash.
Sizes 28-56.

Navy **MT1010**
Black **MT1020**
Bottle Green **MT1090**



Black



Navy



Bottle green

7. UNISEX COMBAT TROUSER

Sewn-in front creases, two hip pockets, one back pocket, flat front and belt loops, part back elasticated waist, front button fastening.

Length 79cm/31in. 67% Polyester,
33% Cotton (195g/m²). 60° wash.
Sizes 28-48.

Navy **UT0980**
Black **UT0990**



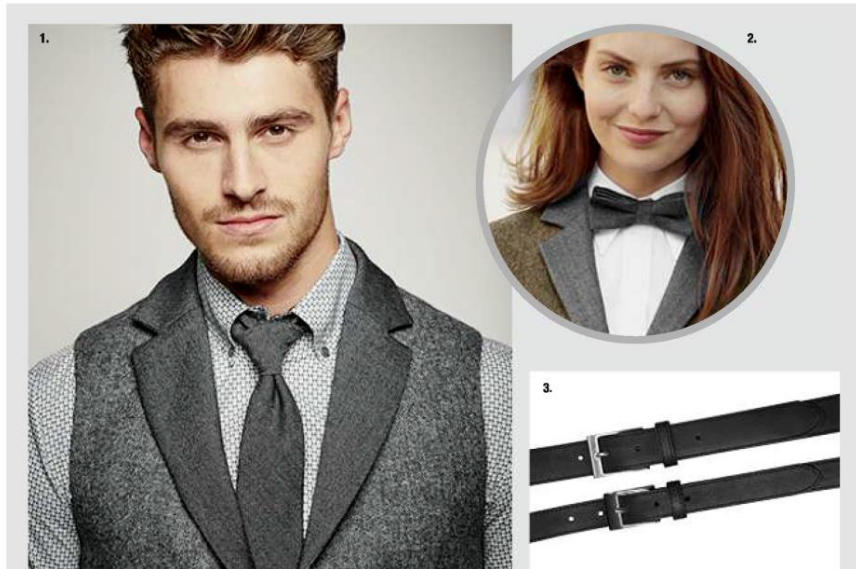
Black



Navy

Items 1-6 Free iron on hem tape pack with all unhemmed trousers – a great solution that allows you to easily hem trousers to required length.





THE FINISHING TOUCH

CREATE YOUR OWN UNIQUE STYLE WITH SIMON JERSEY ACCESSORIES. GO ONLINE NOW TO SEE OUR FULL RANGE.



1. TWEED TIE
Length 146cm/57.5in. 52% Wool, 48% Polyester, 2% Elastane (220g/m²). Dry clean only. One size.
Grey **TH1420**

2. TWEED BOW TIE
Length 45cm/17.5in. 52% Wool, 48% Polyester, 2% Elastane (220g/m²). Dry clean only. One size.
Grey **TH1430**

3. BLACK LEATHER BELT
Men's **MA0190**
Ladies **FA0380**

4. CLIP-ON TIES
100% Polyester. One size.
Navy **TH1390**
Grey **TH1400**
Black **TH1380**

5. SKINNY TIES
100% Polyester. One size.
Black **TH0970**
Silver **TH1410**

6. BOW TIE
100% Polyester satin. Black **TI0350**

7. GEOMETRIC SPOT TIE
Length 146cm/57.5in. 100% Polyester. One size.
Green **TI1440**
Pink **TI1450**
Teal **TI1460**
Royal **TI1470**
Grey **TI1480**
Brown **TI1490**

8. BRACES
Easy hold metal clips. One Size. Black **UA0330**

9. CUFFLINK
Square Metallic **MA0130**
Rounded Metallic **MA0380**
Engraved Silver **MA0390**



100% POLYESTER TIES



Pink multi stripe
TI0940

Garnet stripe
TI0160

Garnet spot
TI0500

Garnet horizontal lines
TI0380



Plum ovals
TI1040

Orange
TI0980

Orange stripe
TI0990

Gold
TI1000



Royal purple
TI1020

Royal purple multi stripe
TI1030

Cobalt blue multi stripe
TI1090

Navy
TI0100

Blue graduated stripe
TI0710



Teal multi stripe
TI0920

Light olive multi stripe
TI0930

Black
TI0090

Charcoal grey
TI1050

Black/white stripe
TI0830

2. SCARF

Cool Crêpe. Length 152cm/60in, width 33cm/14in. 100% Polyester. 30° wash. One size.



Garnet
SC0090

Plum ovals
SC0500



3. FLOPPY BOW

100% Polyester. 30° wash. One size on neck band.

Black

FA0020

4. SCARF

Cool Crêpe. Length 115cm/45in, width 17cm/6.5in. 100% Polyester. 30° wash. One size.



Black/white stripe
SC0490

Pink multi stripe
SC0430

Light olive multi stripe
SC0420

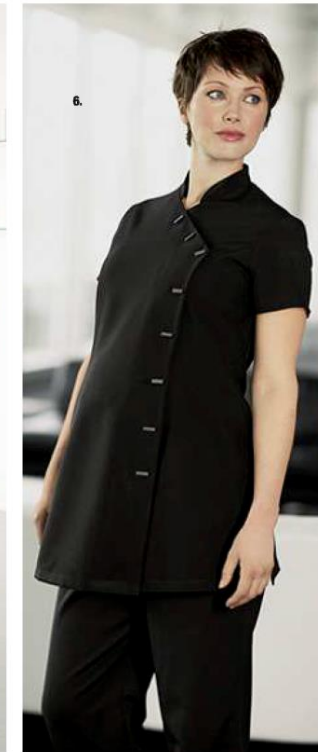
Teal multi stripe
SC0410

Orange multi stripe
SC0460

Royal purple multi stripe
SC0480

Gold multi stripe
SC0470

Cobalt blue multi stripe
SC0560



Back tie detail

1. MATERNITY BLOUSE
Open collar, long sleeves with deep cuff, gathers at lower bust and over tummy, self-fabric back tie detail.



60% Cotton, 35% Polyester, 5% Spandex®, 30° wash. Sizes XS-XXL.

White **FB2840**
Black **FB2990**

2. QUALITAS MATERNITY PARALLEL LEG TROUSER
Comfort jersey front panel, back elastic, parallel leg.



Unhemmed inside leg 88cm/34in. 54% Polyester, 44% Wool, 2% Lycra®, 40° wash. Sizes XS-XXL.

Black **FT1710**
Navy **FT1720**

3. CLASSIC COLLAR MATERNITY TUNIC
Concealed zip front fastening, two hip pockets, two breast pockets.



65% Polyester, 35% Cotton. 60° wash. Sizes S-XL.

Navy with white trim **FM0530**
NEW White with white trim **FM1740**

4. NEW MATERNITY TROUSER
Comfort jersey front panel, black elastic.

54% Polyester, 44% Wool, 2% Lycra®. Sizes 8-30.

Navy **FT3070**

5. NEW DEFINITIVE MATERNITY DRESS
Concealed zip front fastening, two hip pockets, two breastpockets.

65% Polyester, 35% Cotton. 60° wash. Sizes S-XL.

Navy with white trim **MD0910**

6. SELECT MATERNITY ASYMMETRICAL TUNIC
Stand collar, asymmetrical button fastening, capped sleeves, action back, side splits.



100% Polyester (180g/m²). Two way stretch fabric. Easy care. 40° wash. Sizes XS-XXL.

Black **FD3420**

MATERNITY SIZE CHART					
Dress		Sizes in stock			
Tunic		Sizes in stock			
Order size	XS (6)	S (8/10)	M (12/14)	L (16/18)	XL (20/22)
Bust in.	27-29	31-33	35-37	39-41	43-45
Trouser		Sizes in stock			
Order size	XS (6)	S (8/10)	M (12/14)	L (16/18)	XL (20/22)
Hips cm.	76-81	86-91	96-101	101-111	116-122
	30-32	34-36	38-40	42-44	46-48



CAMISERÍA Shirts & Blouses · Chemiserie



Mod. 128
CAMISA HOMBRE M/L
SLIM FIT
 Men's l/s shirt. Slim fit.
 Chemise homme m/l slim fit.



Mod. 728
CAMISA MUJER M/L
SLIM FIT
 Women's l/s shirt. Slim fit.
 Chemisier femme m/l. Slim fit.

● C.000 NEGRO | ● C.001 BLANCO
 black - noir | white - blanc

100% ALGODÓN 100% Cotton - Coton

TALLAS sizes · tailles 36/54 1/9

10



Mod. 383
CAMISA MUJER M/L
CUELLO TULIPÁN
 Women's l/s shirt. Tulip collar.
 Chemisier femme m/l. Col tulipe.



● C.001 BLANCO
 white - blanc



100% ALGODÓN 100% Cotton - Coton

TALLAS sizes · tailles 36/54

11

Mod. 3740
CAMISA MUJER M/C
CON TAPETA
Women's s/s placket shirt.
Chemisier femme m/c avec patte.

● C.001 BLANCO
white - blanc

67% POLIÉSTER - 33% ALGODÓN 67% Polyester - Polyester - 33% Cotton - Coton

TALLAS sizes · tailles 36/54

13

Mod. 415
CAMISA HOMBRE M/L
CUELLO PAJARITA
Men's wing collar l/s shirt.
Chemise homme m/l, col cassé.

● C.001 BLANCO
white - blanc

67% POLIÉSTER - 33% ALGODÓN 67% Polyester - Polyester - 33% Cotton - Coton

TALLAS sizes · tailles 35/50

12

NUEVO PATRÓN
new pattern
nouveau patron

CAMISERÍA *Shirts & Blouses · Chemiserie*

Mod. 788
CAMISA MUJER
MANGA 3/4. ESCOTE EN V
Women's 3/4 sleeve V neck shirt.
Chemisier femme manche 3/4, col V.



STRETCH



- C.001 BLANCO
white - blanc
- C.056 BURDEOS
burgundy - bordeaux
- C.058 NEGRO
black - noir
- C.084 LIMA
lime - vert lime

65% ALGODÓN - 35% ELASTOMULTIESTER 65% Cotton · Coton - 35% Elastomultiester · Elastomultiester

TALLAS sizes · tailles 36/54

26

Mod. 703
BLUSA BICOLOR M/L
ESCOTE PAÑUELO
1/2 blouse. Scarf collar. Bicolour.
Blouse m/l. Col foulard. Bicolore.




C.000 NEGRO
black - noir

C.200 BLANCO ROTO
off white - blanc cassé

97% POLIÉSTER - 3% SPANDEX 97% Polyester · Polyester- 3% Spandex · Spandex

TALLAS sizes · tailles 36/54

31

CAMISERÍA Shirts & Blouses · Chemiserie



Mod. 747
BLUSA M/L
ESCOTE PLIEGUES
*l/s blouse with folded neckline.
Blouse m/l à col replié.*



● C.011 CELESTE | ● C.200 BLANCO ROTO
light blue · bleu ciel | off white · blanc cassé



Mod. 7470
BLUSA M/C
ESCOTE PLIEGUES
*s/s blouse with folded neckline.
Blouse m/c à col replié.*

100% POLIÉSTER 100% Polyester · Polyester

TALLAS sizes · tailles 36/54



Mod. 749
BLUSA M/L CON TABLA
EN DELANTERO
*l/s blouse with a frontal pleat.
Blouse m/l avec un pli central.*



Mod. 7490
BLUSA M/C CON TABLA
EN DELANTERO
*s/s blouse with a frontal pleat.
Blouse m/c avec un pli central.*

● C.000 NEGRO | ● C.008 ROJO | ● C.051 ROSA PALO | ● C.080 FUCSIA | ● C.200 BLANCO ROTO
black · noir | red · rouge | old rose · rose poudré | fuchsia · fuchsia | off white · blanc cassé

100% POLIÉSTER 100% Polyester · Polyester

TALLAS sizes · tailles 36/54

CAMISERÍA Shirts & Blouses · Chemiserie



Mod. 186

CAMISA HOMBRE M/L
CON RECOGEMANGAS.
COMBINADA

Men's l/s shirt. Band to roll up
sleeve. Combined.
Chemise homme m/l. Manches
transformables. Combinée.



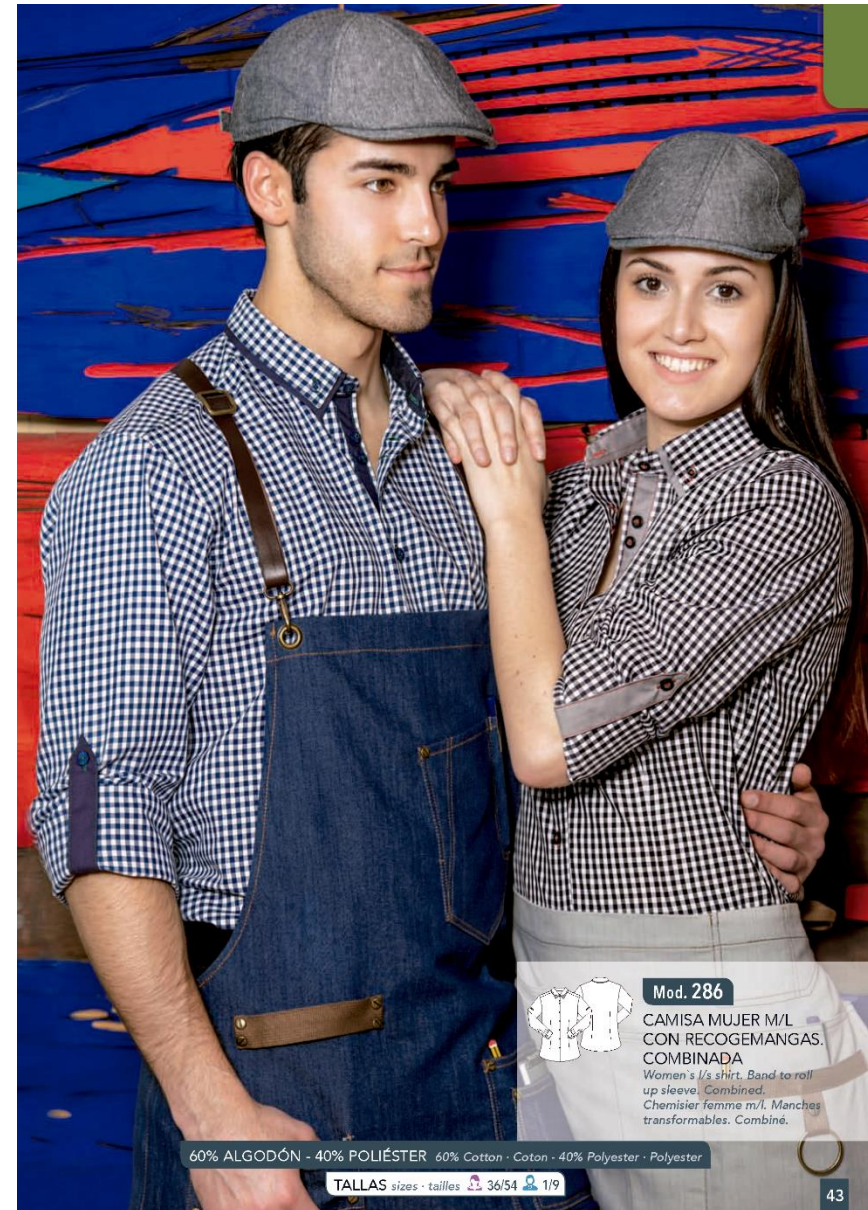
C.019 CUADROS MARINO + MARINO
navy blue checks + navy blue
carreaux bleu marine + bleu marine



C.025 CUADROS MARENGO + GRIS
charcoal grey checks + grey
carreaux gris anthracite + gris

60% ALGODÓN - 40% POLIÉSTER 60% Cotton · Coton - 40% Polyester · Polyester

TALLAS sizes · tailles 36/54 1/9



Mod. 286

CAMISA MUJER M/L
CON RECOGEMANGAS.
COMBINADA

Women's l/s shirt. Band to roll
up sleeve. Combined.
Chemisier femme m/l. Manches
transformables. Combiné.



60% ALGODÓN - 40% POLIÉSTER 60% Cotton · Coton - 40% Polyester · Polyester

TALLAS sizes · tailles 36/54 1/9

BAJO PEDIDO-CANTIDAD MÍNIMA 25

CAMISERÍA *Shirts & Blouses · Chemiserie*




BAJO PEDIDO

Mod. 437
CAMISA HOMBRE
CUELLO MAO. M/L
RECOGEMANGAS
*Men's l/s mao collar shirt. Band to roll up sleeve.
Chemise homme col mao.
Manches transformables.*



 C.001 BLANCO
white - blanc

CHAMBRAY 80% ALGODÓN - 20% POLIÉSTER 80% Cotton · Coton · 20% Polyester · Polyester




BAJO PEDIDO

Mod. 435
CAMISA HOMBRE M/L
CIERRE POLO
*Men's l/s shirt. Polo closure.
Chemise homme m/l. Fermeture polo.*



 C.001 BLANCO
white - blanc

CHAMBRAY 80% ALGODÓN - 20% POLIÉSTER 80% Cotton · Coton · 20% Polyester · Polyester





CAMISERÍA Shirts & Blouses · Chemiserie





Mod. 701

**BLUSA CUELLO LAZADA
M/L ABULLONADA**
Puffed l/s blouse, Bow collar.
Blouse m/l bouffante à noeud au col.



97% POLIÉSTER - 3% SPANDEX 97% Polyester · Polyester-3% Spandex · Spandex

CAMISERÍA Shirts & Blouses · Chemiserie







Mod. 145

**CAMISA HOMBRE M/L
COWBOY**
Men's l/s cowboy shirt.
Chemise cowboy homme m/l.



100% ALGODÓN 100% Cotton · Coton



Mod. 245

**CAMISA MUJER M/L
COWBOY**
Women's l/s cowboy shirt.
Chemise cowboy femme m/l.





 **Mod. 241**
CAMISA MUJER M/L
CUELLO BEBÉ
Women's l/s shirt. Baby collar.
Chemisier femme m/l. Col bébé.





100% ALGODÓN 100% Cotton · Coton

46



 **Mod. 141**
CAMISA HOMBRE M/L
SLIM FIT
Men's l/s shirt. Slim fit.
Chemise homme m/l. Coupe slim.





100% ALGODÓN 100% Cotton · Coton

TALLAS sizes - tailles 

47

CAMISERÍA Shirts & Blouses · Chemiserie



Mod. 149

CAMISA HOMBRE M/L
CUELLO MAO COMBINADO
Men's 1/2 shirt. Combined mandarin collar.
Chemise homme m/l. Col mao combiné.



Mod. 249

CAMISA MUJER M/L
CUELLO MAO COMBINADO
Women's 1/2 shirt. Combined mandarin collar.
Chemisier femme m/l. Col mao combiné.



100% ALGODÓN 100% Cotton · Coton



Mod. 1480

POLO UNISEX M/C. DOBLE
CUELLO COMBINADO
Unisex s/s polo shirt. Combined double collar.
Polo unisex m/c. Col double combiné.



100% ALGODÓN 100% Cotton · Coton

CAMISERÍA Shirts & Blouses · Chemiserie




BAJO PEDIDO

Mod. 162
CAMISA HOMBRE M/L
ESTAMPADO REVERSIBLE
*Men's l/s shirt. Reversible print.
Chemise homme m/l. Imprimé réversible.*



100% ALGODÓN 100% Cotton · Coton




BAJO PEDIDO

Mod. 262
CAMISA MUJER
MANGA 3/4 Y CUELLO
VOLANTE. ESTAMPADO
REVERSIBLE
*Women's 3/4 sleeve shirt.
Flounce collar. Reversible print.
Chemisier femme manche 3/4.
Col volant. Imprimé réversible.*



100% ALGODÓN 100% Cotton · Coton

G&C Uniformes

c/ Buenos Aires, 26
13300 – Valdepeñas (Ciudad Real)
Telf. 926312654 – 639175945